

Powell River Historical Museum and Archives
Spring 2022 Speakers Series

qathet Region Forest History
an overview

Presented **Thursday, March 10, 2022, 6:30 pm**

By Dave Florence

President PR Forestry Heritage Society 2010-present
Webmaster for: qathet.prfhs.org
Editor BC Forest History Association Newsletter 2016-2021

The Approach – Time intervals

- Indigenous use of the forest
from time immemorial to the colonization era
- Colonization era, from 1870 in **30 year intervals**
1870 – 1900; 1900 – 1930; 1930 – 1960; 1960 – 1990; 1990 – 2020
More: April 7, Drew Blaney; May 12; Rod Tysdal, June 11, Janet May

Lenses

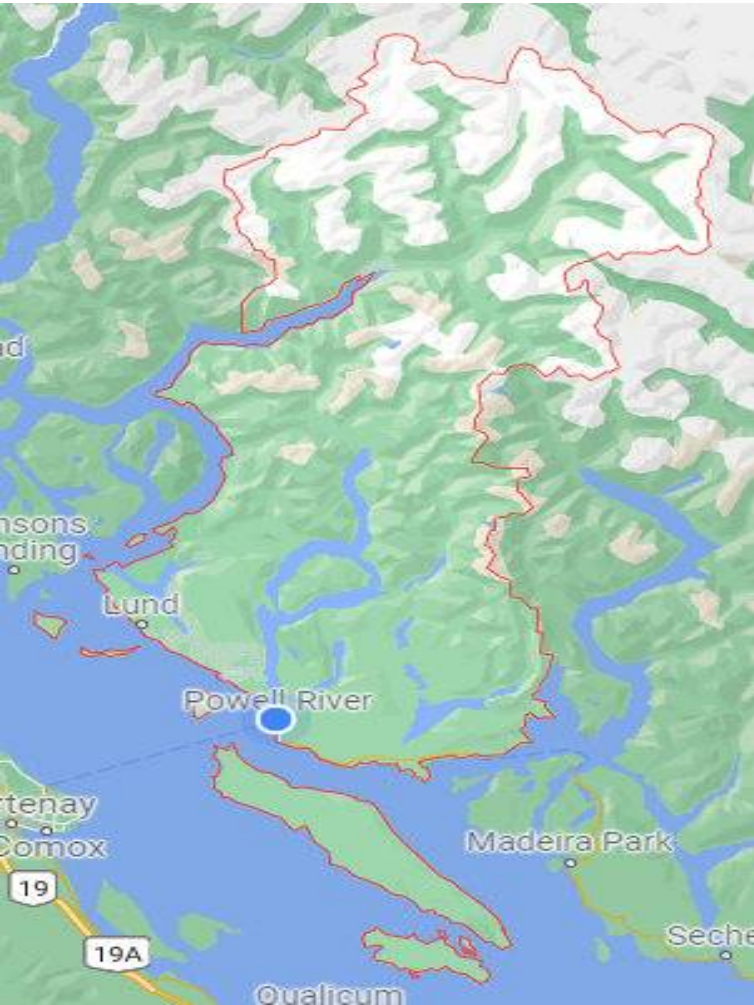
- Changing **Values/Policies**
- **Technologies and Activities** in the Forest

Changing forest values and policies

Society has new expectations

- **Social**
 - Cultural, spiritual, recreational
- **Environmental**
 - Health: biodiversity, soils quality, watershed quality, fish and wildlife habitat, , visual quality, carbon retention, old growth retention,
- **Economic**
 - Trapping, hunting, foraging, mining, timber extraction (logging), forest products: e.g. pulp and paper, shakes and shingles, furniture, ecotourism, art objects

Where is the qathet forest



Forestry Heritage Society interest:

- The forest of the qathet Regional District and ʔamən (Tla'amin), plus
- Jervis inlet in shíshálh (Sechelt) traditional territory, and
- the islands to the north of qathet in ʔos (Tlo'hos, Klahoose) and Xwémalhkwu (Homalco) traditional territory; Cortez, Redondas, Toba, etc

Indigenous stewardship of the forest

- **Values/Policies ... not changing**
 - Close cultural, spiritual connection to the forest
 - Stewardship ensured ecological preservation
- **Technologies and activities in the qathet Forest**
 - Forests provided tools, shelter, food (plants and wildlife), medicine, clothing, transportation (canoes), art (*through indigenous oral history, archaeological evidence*)

Cedar Tree

from time immemorial to 1870

- “Sacred” Cedar mother tree was central to providing shelter, food (plants and wildlife), medicine, clothing, tools, transportation (canoes), art



Nikita Johnston
and Betty Wilson,
2019

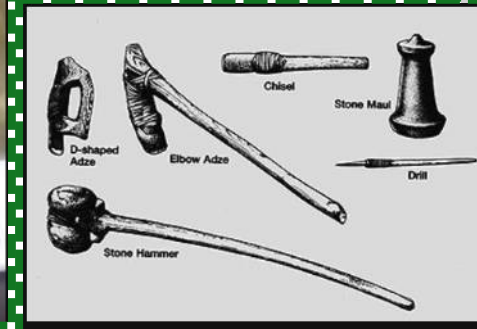
<https://www.powellrivermuseum.ca/story-of-cedar.html>

Technologies

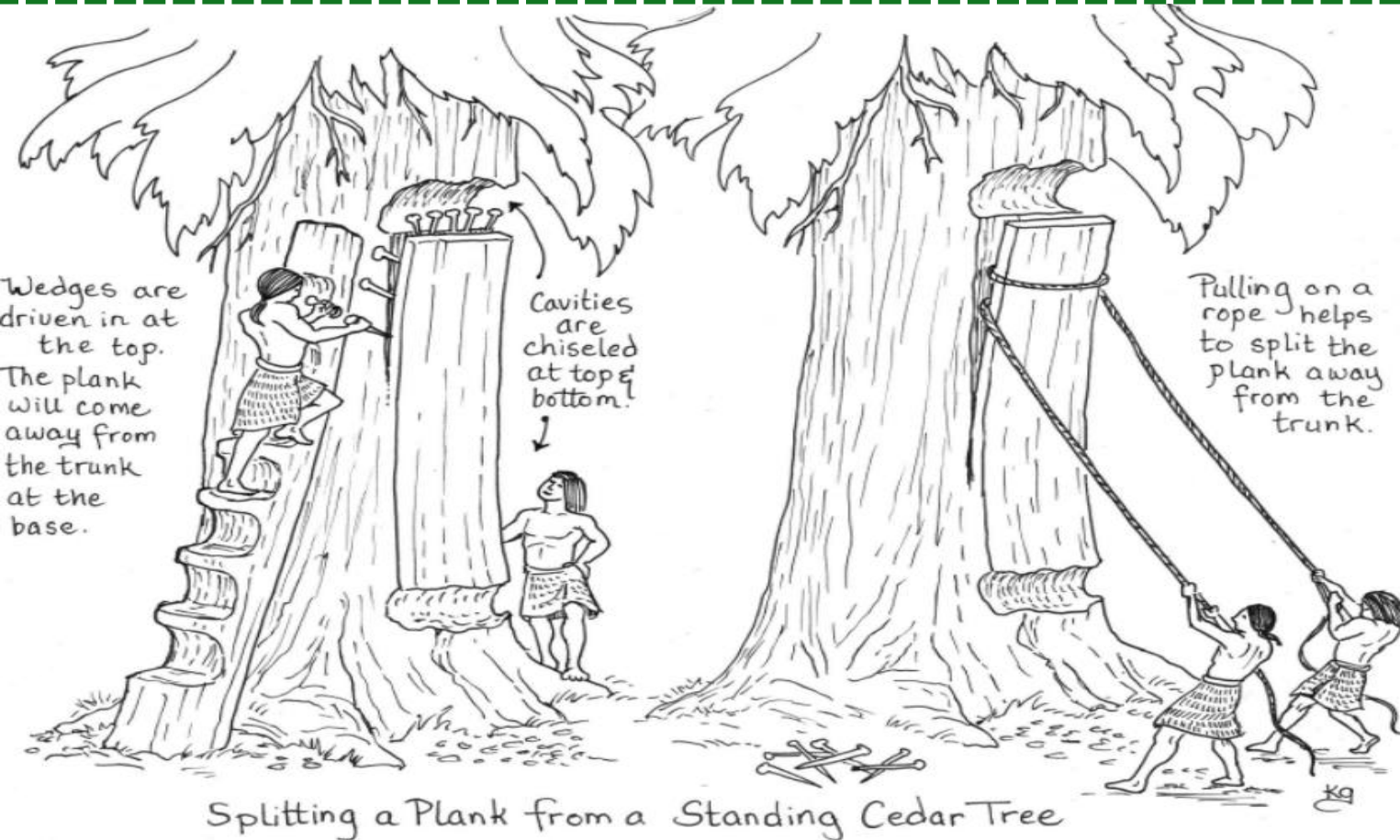
Tools of the forest

from time immemorial to 1870

- for hunting, fishing, trapping, foraging
- Adze, maul, hammer, wedge, fibre, baskets



Shelter - Planks



Making a plank :
Braiding Indigenous
Science with Western
Science, Book 1

by Gloria Snively and
Wanosts'a7 Lorna

<https://pressbooks.bccampus.ca/knowninghome/>

Planks were a valued
commodity, often used to
make temporary houses
and move by canoe to a
different location

from time immemorial to 1870

Shelter

Planks, posts, spurs and shakes for houses crafted from live and felled cedar trees using wedges, hammers, adze, fire

Photo – ʔišosəm prior to 1918 fire – from Nov 2018 Neh Motl



Technologies Transportation

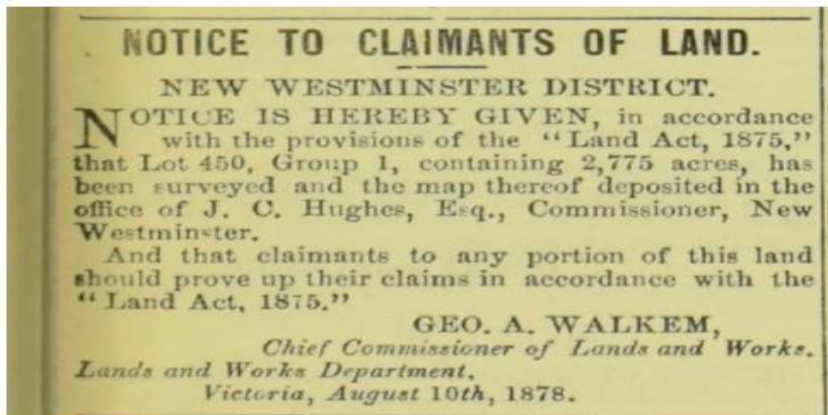
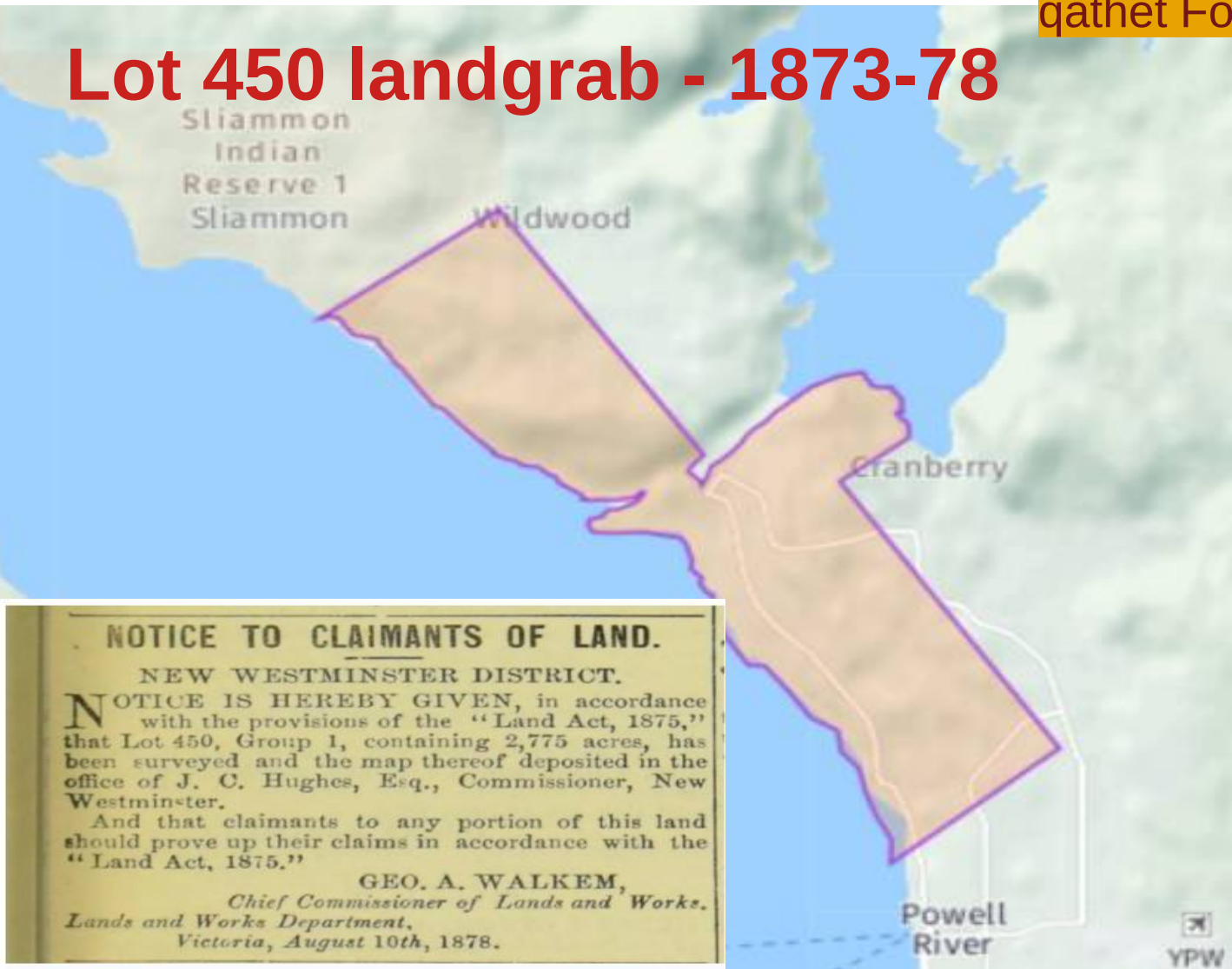
from time immemorial to 1870



Lenses

- **Changing Values/Policies**
 - BC joined Canada 1871, Indian Act 1876, Timber Act 1884
 - Indigenous people disenfranchized, (Lot 450, preemptions)
- **Technologies and activities in the qathet Forest**
 - Furs to HBC, Mining, mainly on Texada
 - Trapping, hand-logging, oxen logging,
 - Late 1990s: steam donkeys, railroads, early sawmills

Lot 450 landgrab - 1873-78



2775 acres
1123 ha.
11 sq km

Includes timber
"rights"
RP Rithet

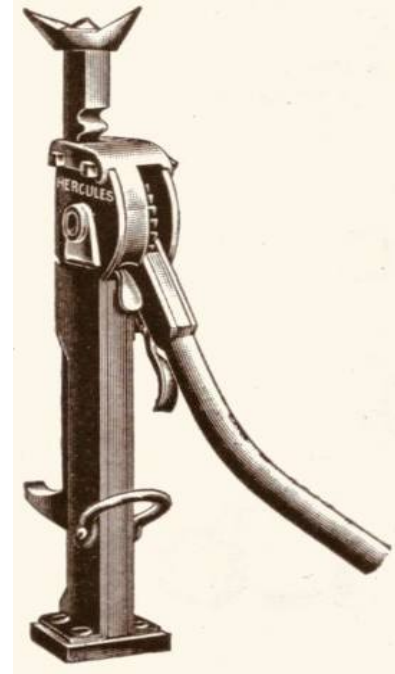
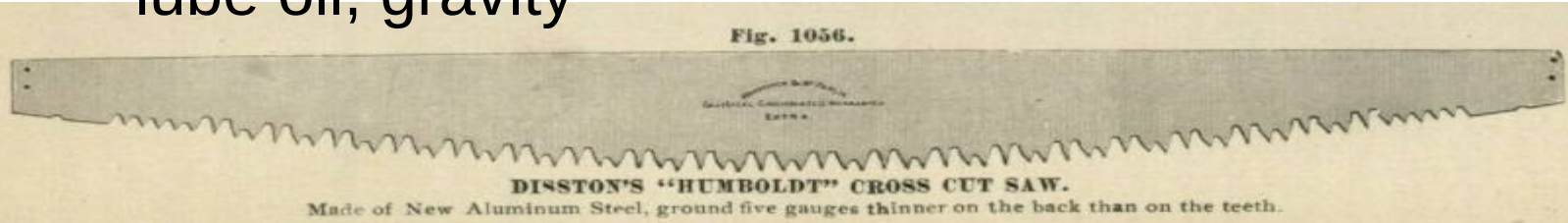
Website: A. Bryant
[https://www.imagine
lot450.ca/](https://www.imaginelot450.ca/)

Technologies Handlogger Tools

- double bitted axe, felling saw, Ghilchrist Jack, wedges, lube oil, gravity

qathet Forest Timeline 1870 – 1900

From 1860s
until 1940s



• Handlogging Techniques

qathet Forest Timeline 1870 – 1900

- **Policy:**
No power tools
(to provide employment opportunities for independent loggers)



Section 60: Land Act

“The Chief Commissioner may, upon payment of the sum of twenty-five dollars therefor, grant a general license to cut timber from Crown Lands, not being timber limits or leases, and within such area as may be specified or designated in such license or lease; but such license shall be personal, and shall only grant authority to the person named therein to cut timber as a hand-logger, and such license shall be in force for one year from the date thereof, and no longer.

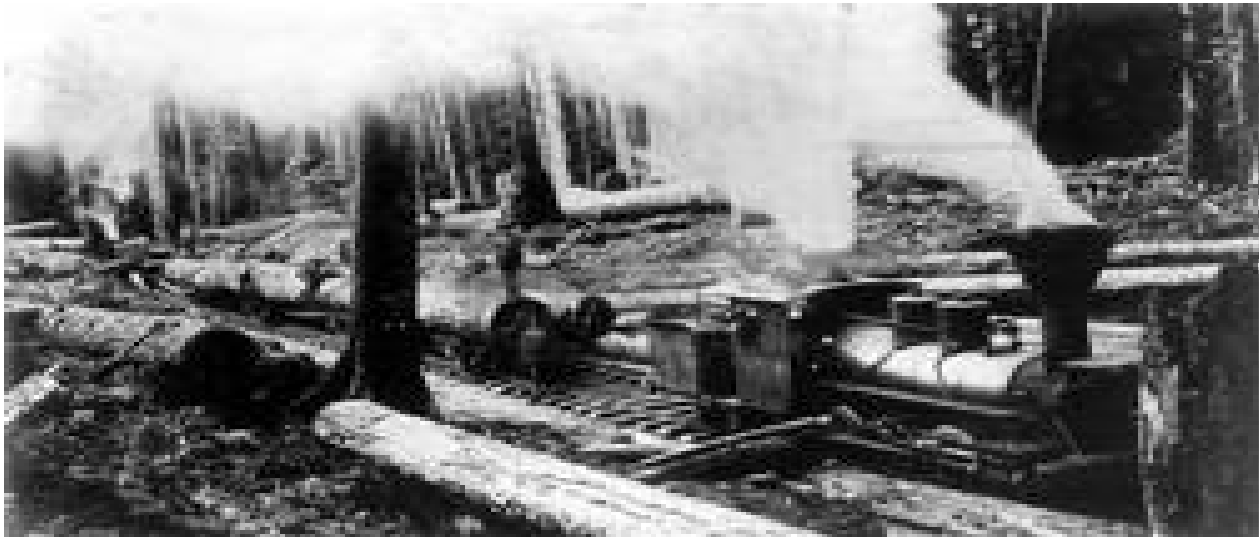
“The holder of a license granted under this section shall not use steam power or machinery operated by steam power, in carrying on lumber operations under such license.”

- Jim Springer 1883, boomed at Tis'kwat
- Willingdon Beach Trail, Lang creek, Lund, Stillwater, Texada



Technologies - Railroads – from 1890s

- Moodyville Sawmill Company
- Hastings Mill
- Lang creek – possibly “old Curly” here
- Wildwood also had a railroad from Tla’amin village



Technologies - Mines

qathet Forest Timeline 1870 – 1900

**Marble Bay
Mine, Texada Island
BC Archives G-06225
1890s**





Few sawmills close by
until late 1990s

John Green's cabin,
Savary Island, 1893,
F-03779

Technologies Sawmills

qathet Forest Timeline 1870 – 1900

- Carter brothers Sawmill, Van Anda, 1898
- Pacific Lime Sawmill at Blubber Bay
 - (Lumber for Powell River, Myrtle Point, Lang Bay)

<http://www.texadaheritagesociety.com/texada-heritage-society-gallery-sawmills.htm>



Lenses

- **Changing Values/Policies**
 - Fulton Royal Commission 1910, Forest Act 1912,
 - Economy: Land sales, Pulp Leases encouraged
- **Technologies and activities in the qathet Forest**
 - Forest industry expands in qathet region,
 - Powell Lake raised 1910, 1924
 - Heyday of Railroad logging, and earliest truck logging (Cornell 1920), fire lookout 1924

Changing forest values/Policies

qathet Forest Timeline 1900 – 1930

1923 map



Tla'amin active in logging

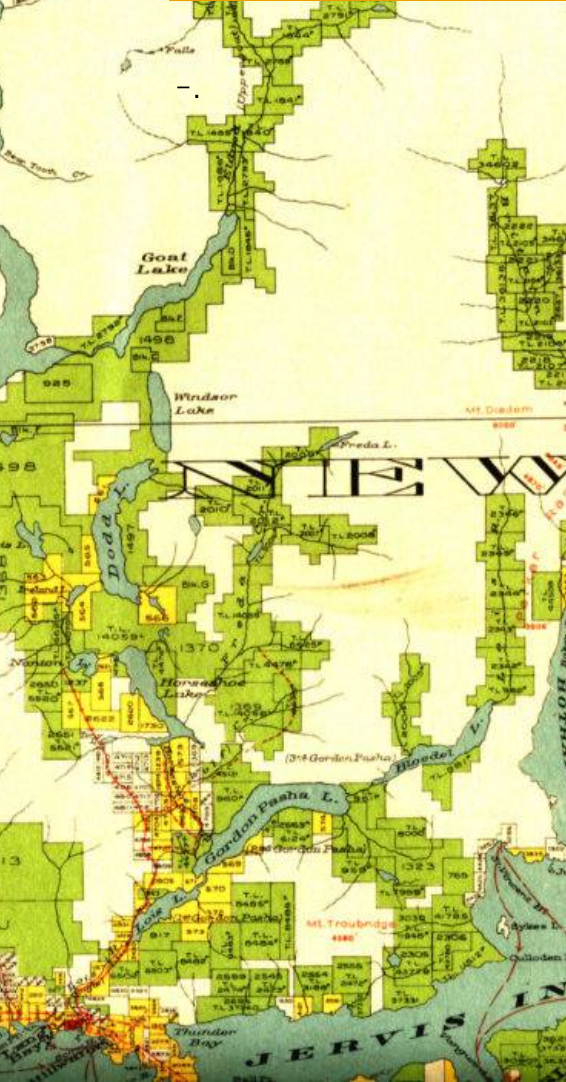
qathet Forest Timeline 1900 – 1930

Photo prior to 1918 fire – from Nov 2018 Neh Motl

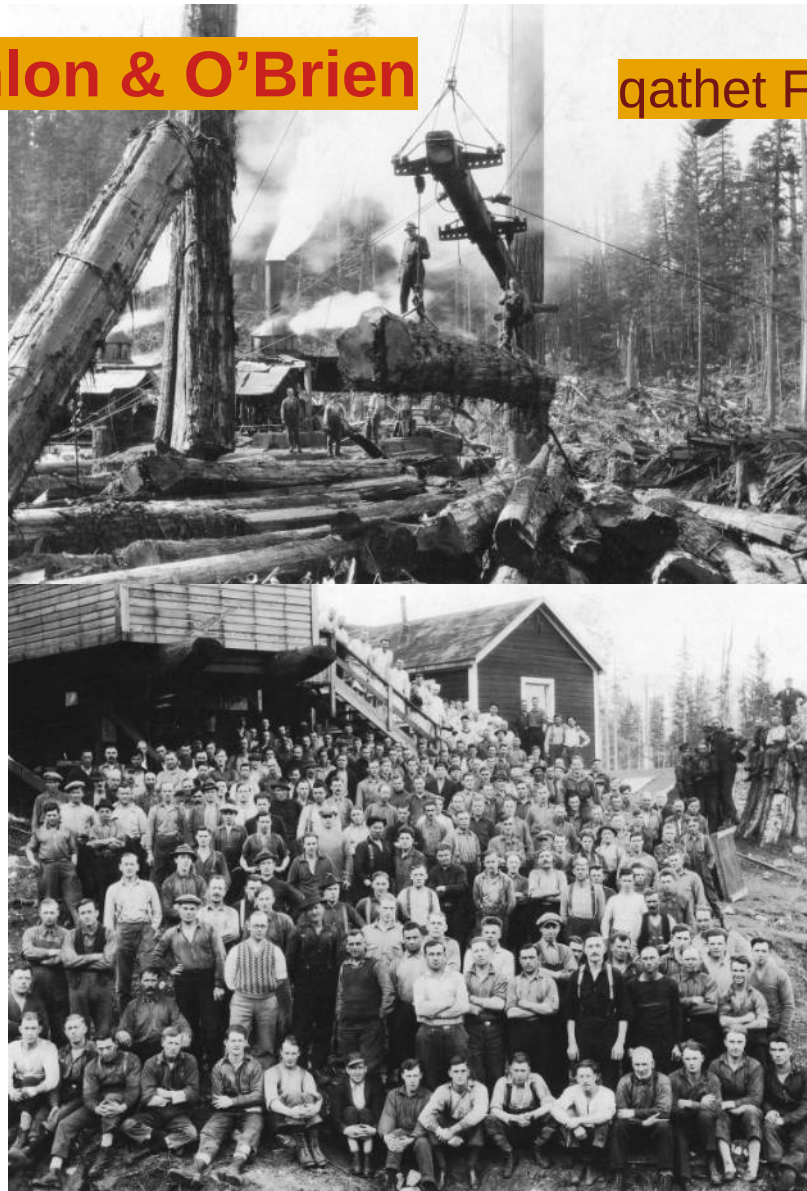
Tis'kwat people moved to here in 1910



Brooks, Scanlon & O'Brien



qathet Forest Timeline 1900 – 1930



- O'Brien starts alone early 1900s
- BSO - 1908 – 1928
- In 2016: 140,000 m³ per year, reserves 1.8 million m³ over their 20 years
- Major Horseshoe Valley fire in 1926
- BSO sold to Powell River Company 1929

Brooks, Scanlon & O'Brien

qathet Forest Timeline 1900 – 1930

1919 – Kew Gardens Flagpole



Stillwater; flag pole for the Kew Gardens in England, men standing on the full length of a 237ft log, 1919. (ID 1967.1.4527)



1926

Spring
Lake
Camp 4:
car on the
track-
1923
Packard
Runabout
with
flanged
wheels
"speeder"
or jitney

Technologies

Brooks, Scanlon & O'Brien

Crawler tractor
1926



qathet Forest Timeline 1900 – 1930

Flume into
Stillwater Bay



Communities

qathet Forest Timeline 1900 – 1930



Horseshoe Valley's hearty hunting homesteaders



BLAST FROM THE PAST

JOËLLE SÉVIGNY

There are quite a few weekend warriors out here in qathet, heading up Goat Main on a Saturday morning for an epic outdoor adventure, or

steads built in the wilderness, as a young boy with his family from 1916 to 1923. They settled on their lot of 265 acres, after Walt Stanley, his uncle,

valley; instead, they spread large quantities of alder leaves on the ground and dug them in.

In the summers, they would also gather blackberries and huckleberries. No one in the valley ate beef. Deer meat, grouse and trout were the only source of protein.

At the time, Brooks, Scanlon and O'Brien had a railroad running from Stillwater, up Eagle (Lois) River, and so the settlers would sometimes ride the trains and bring back supplies from town (flour, sugar, yeast, oats), or got their mail carried for them.

Towards the end of the settlement, the Powell River Company bought out all the homesteads in preparation for the construction of the dam at the head of Lois Lake. After the cofferdam was constructed in 1931, parts of the Valley were flooded.

The Stanleys were given around \$5,000 to 8,000 for their land.

According to Golden Stanley's memoirs, some of the best farmland in the region lies beneath the conifer trees of the Horseshoe Valley.

PL | jysevigny@powellrivermuseum.ca

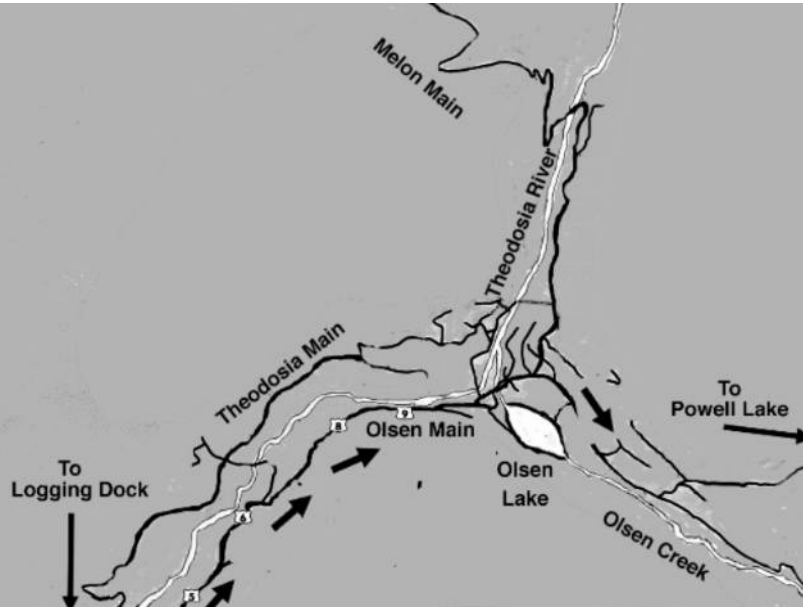


Communities

qathet Forest Timeline 1900 – 1930

Olsen's Landing

- Farming community started during WWI, had a school, small shingle mill
- Water diverted 1955
- Buildings destroyed 1972
- Photos Dave Hurrie <http://www.vanishinghistory.ca>



Michigan-Puget Sound Logging.

qathet Forest Timeline 1900 – 1930

*From
Digester
1929*

*Rod LeMay
photo*

Disconnected
trucks

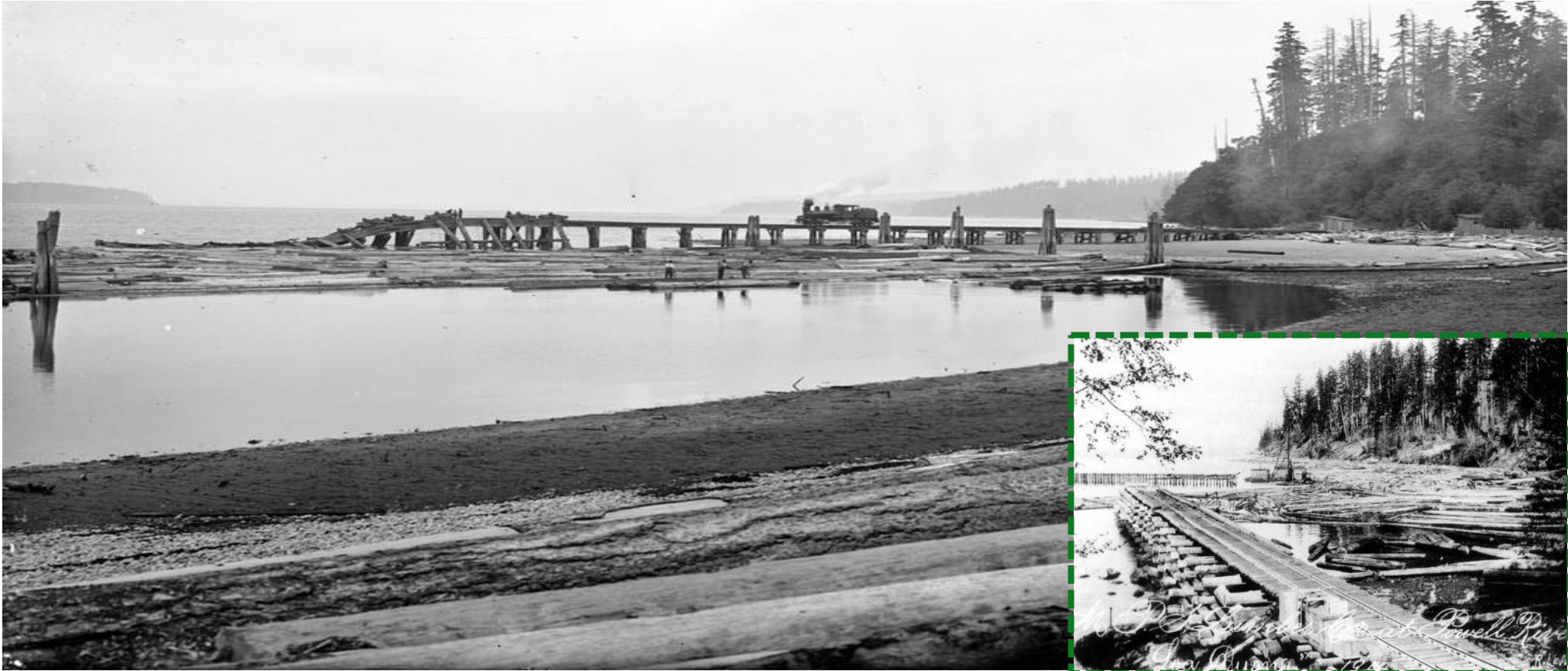
Rights to
236,000 M³
timber

10 years to
haul through
Powell River
to Michigan
Landing

Logging operations on the Michigan, Puget Sound Railway in 1907.

1910: Block Bay rail line moved from future PR Mill site to Michigan Landing

1967.1.19, Michigan Landing (Willingdon Beach) shore and wharf looking north toward mill site



Michigan-Puget Sound Logging.

qathet Forest Timeline 1900 – 1930

Shay #1982 served as Sayward #1, then on the M&PS #1 Powell River 1911-18 (Beach Trail); then to Vancouver Island in 1919 and back as BS&W #4 from 1923 - 1928 on the Myrtle Rocks to Haslam Lake line



Powell River Company

qathet Forest Timeline 1900 – 1930

Brooks Scanlon **1908** purchased and leased - 55,000 ha. land (5000 ha. in qathet forest, most in Kingcome Inlet, Haida Guai, etc)

Dam from 36 meters 1910 to 56 meters in 1923 to 86 meters

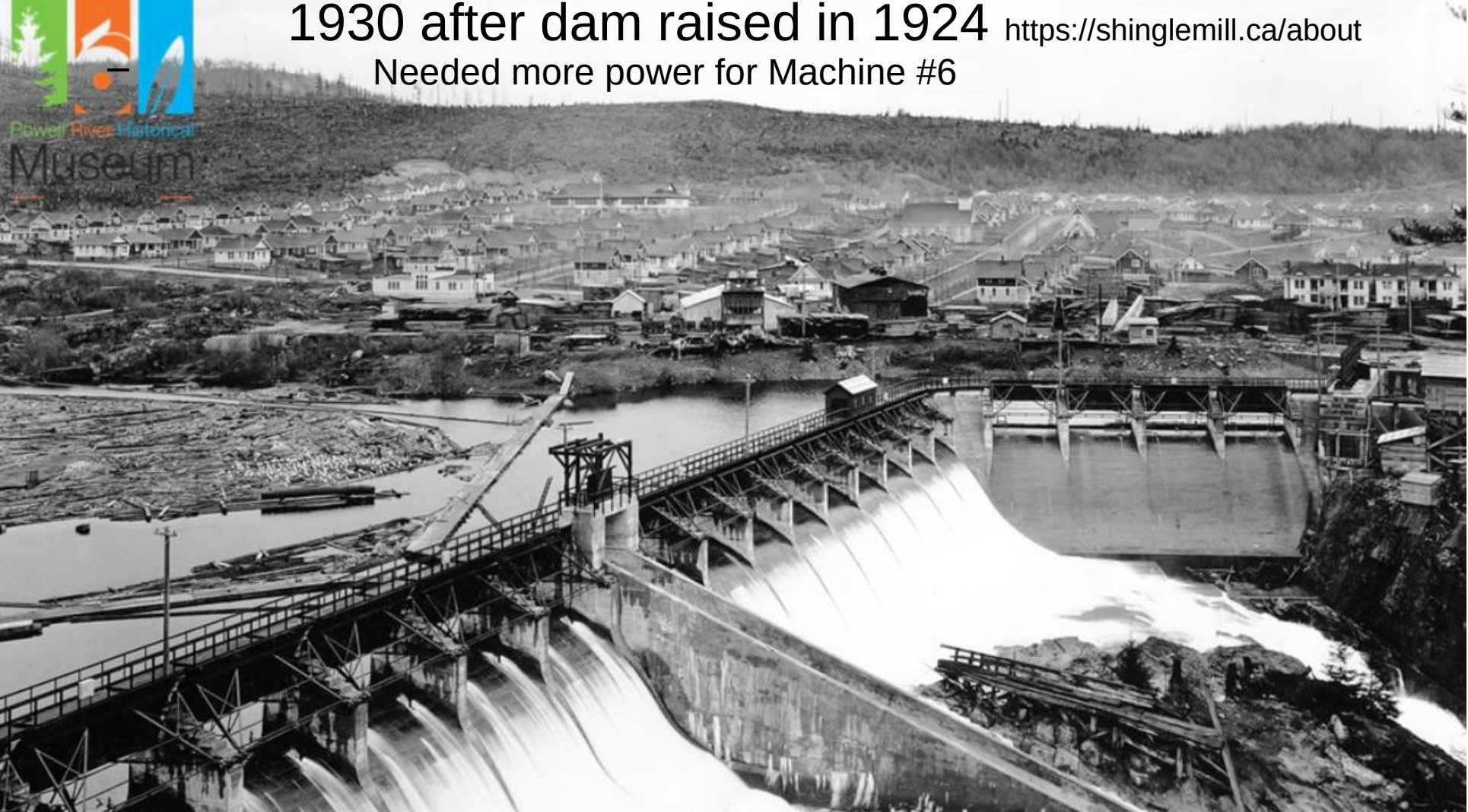


Powell River Company

qathet Forest Timeline 1900 – 1930

1930 after dam raised in 1924 <https://shinglemill.ca/about>

Needed more power for Machine #6



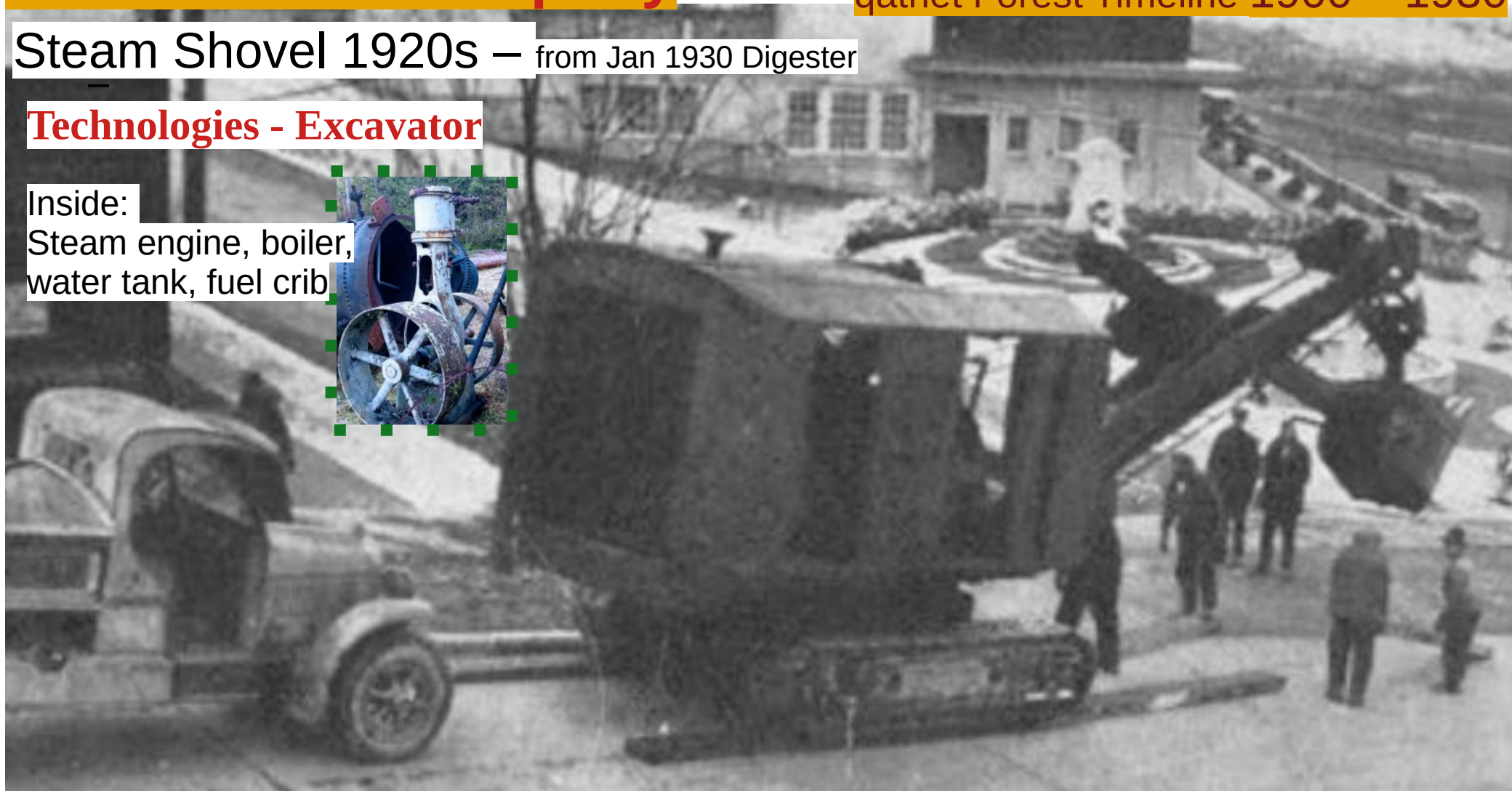
Powell River Company

qathet Forest Timeline 1900 – 1930

Steam Shovel 1920s — from Jan 1930 Digester

Technologies - Excavator

Inside:
Steam engine, boiler,
water tank, fuel crib



Powell River Company

qathet Forest Timeline 1900 – 1930

Activities – Recreation – 1912 May 1931 Digester

Anybody remember this afternoon? On July 1, 1912, one of the locies of the Michigan and Puget Sound Railway hitched on three or four flats and took local society on the first townsite picnic to Michigan, or Westview, as it is now known.



Bloedel Stewart Welsh

qathet Forest Timeline 1900 – 1930



1911 Leased (4046 hectares) of prime timber at Myrtle Point for \$100,000,

After
big fire
in 1918
Bought
Straits
Lumber
Rights
to
Duck &
Haslam
**until
1928**



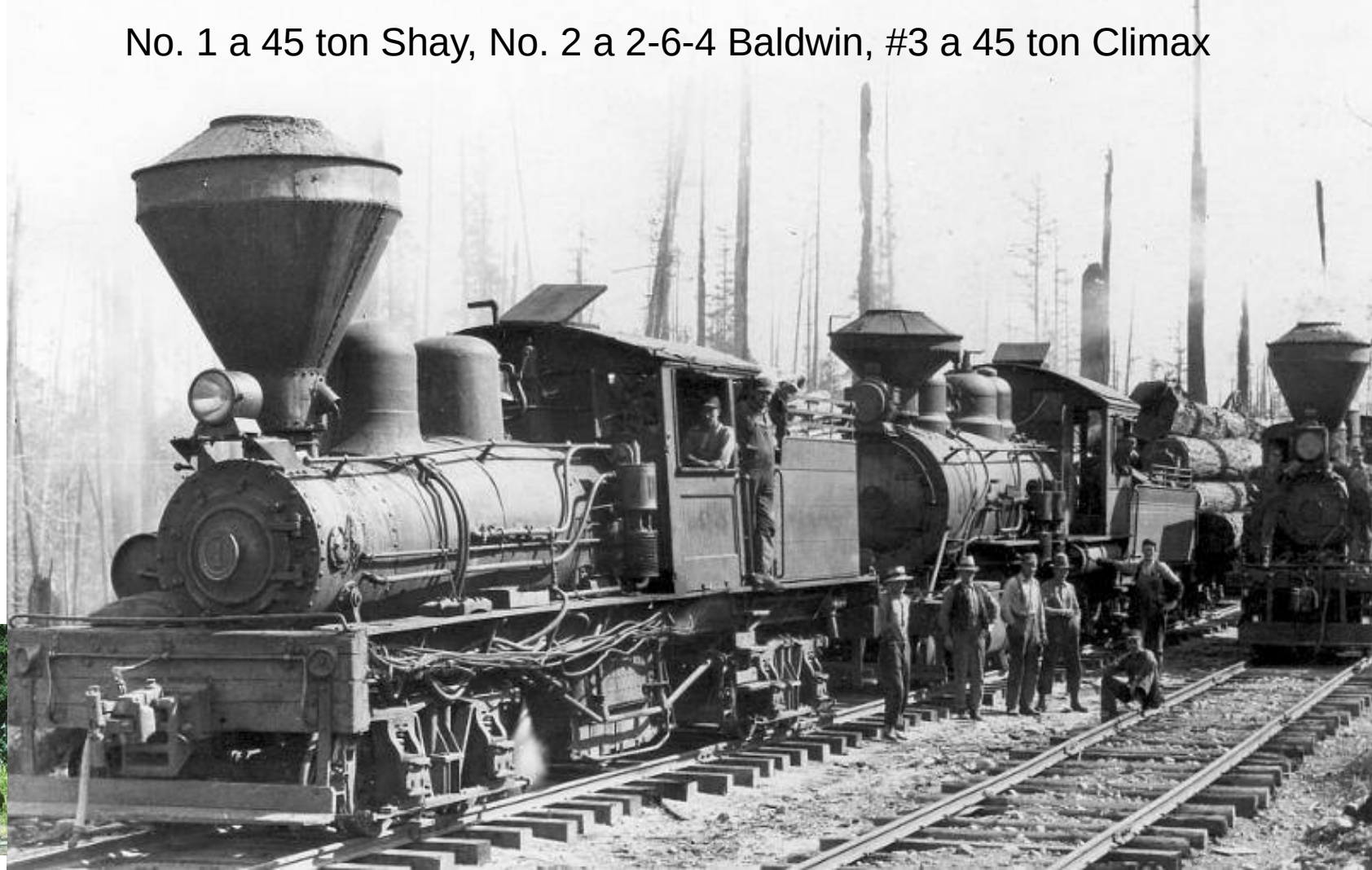
Bloedel Stewart Welsh

qathet Forest Timeline 1900 – 1930

Railway in 1919

- 32 km track
- 49 cars
- 5 locos
- 4 camps
- 250 men

“One Spot” now
in Duncan

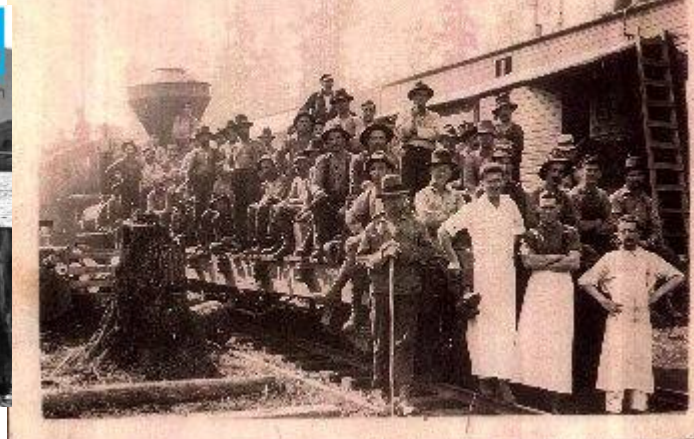


Bloedel Stewart Welsh

<http://qathet.prfhs.org/railroads/historic-paradise-valley-railroad>

qathet Forest Timeline 1900 – 1930

today



1910

Bloedel Stewart Welsh

qathet Forest Timeline 1900 – 1930

Technologies

High Lead
Logging

Double
winches for
fast loading

*Forestry
Museum Display*



Lang Creek logging

qathet Forest Timeline 1900 – 1930

Many companies here from 1890s up until leases bought by Bloedel Stewart and Welch in 1918; logged to 1929; then reverted to province

Moodyville Sawmill Company.

Hastings Mill

BC Mills Timber and Trading Co.

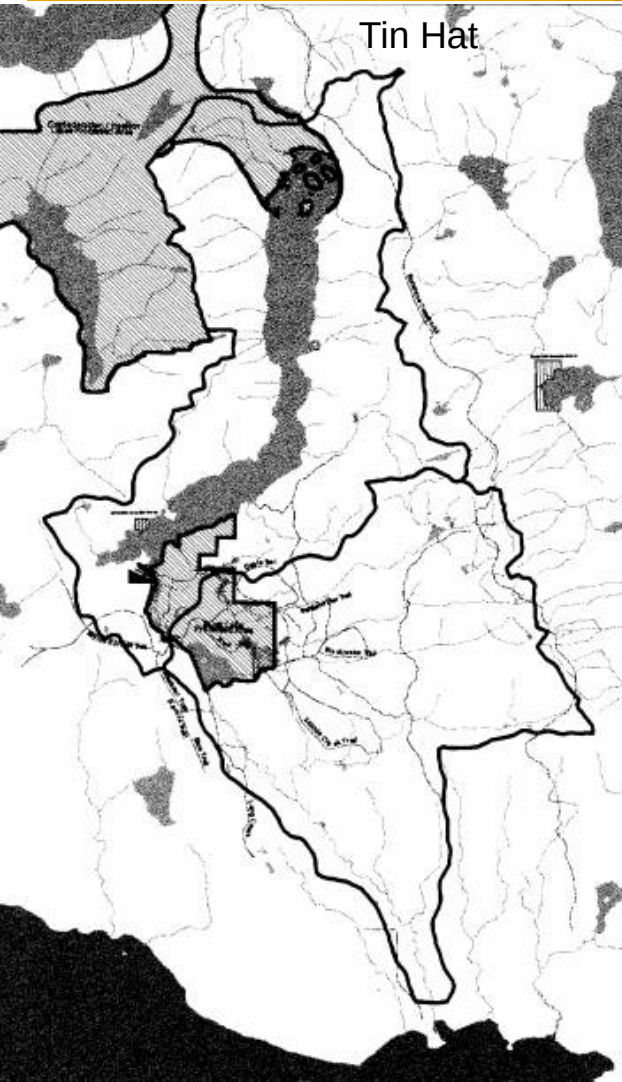
Vancouver Timber and Trading

Lamb Lumber Company

Haslam Lake Timber and Logging

Straits Lumber Company

Brooks, Bidlake and Whittall

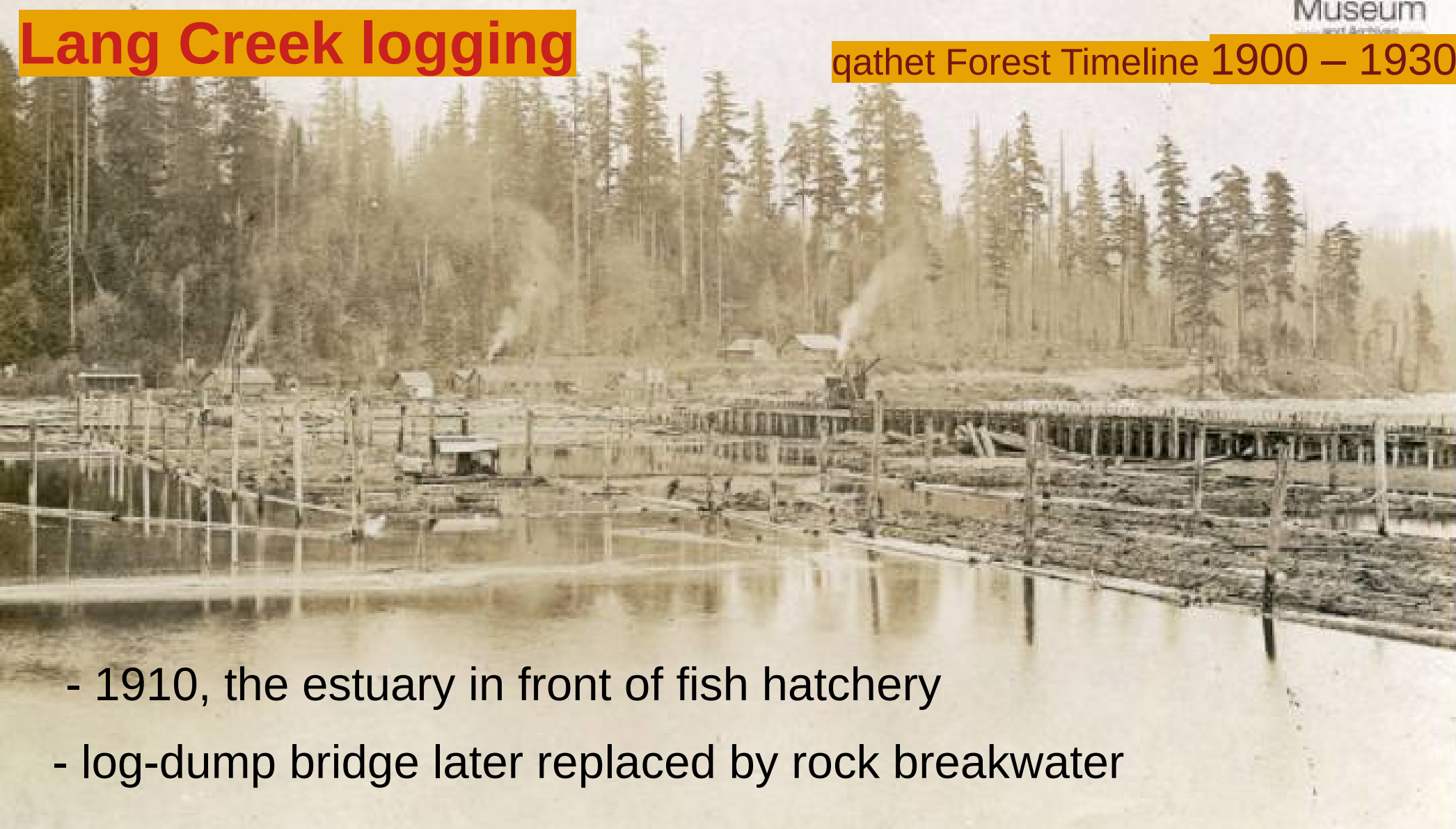


Lang Creek Watershed (WS)

- Logging licences were issued by Watersheds:
 - Powell Lake WS to north, Myrtle Creek WS to south-west, Lois River WS to east
 - Protected areas crosshatched
- Map from 1999 Lang Creek Integrated Water Management Plan
- <https://prcommunityforest.ca/wp-content/uploads/2017/04/HASLAM-LAKE-LANG-CREEK-IWMP-FINAL-REPORT-for-Website.pdf>

Lang Creek logging

qathet Forest Timeline 1900 – 1930



- 1910, the estuary in front of fish hatchery
- log-dump bridge later replaced by rock breakwater

Merrill and Ring Logging, Theodosia

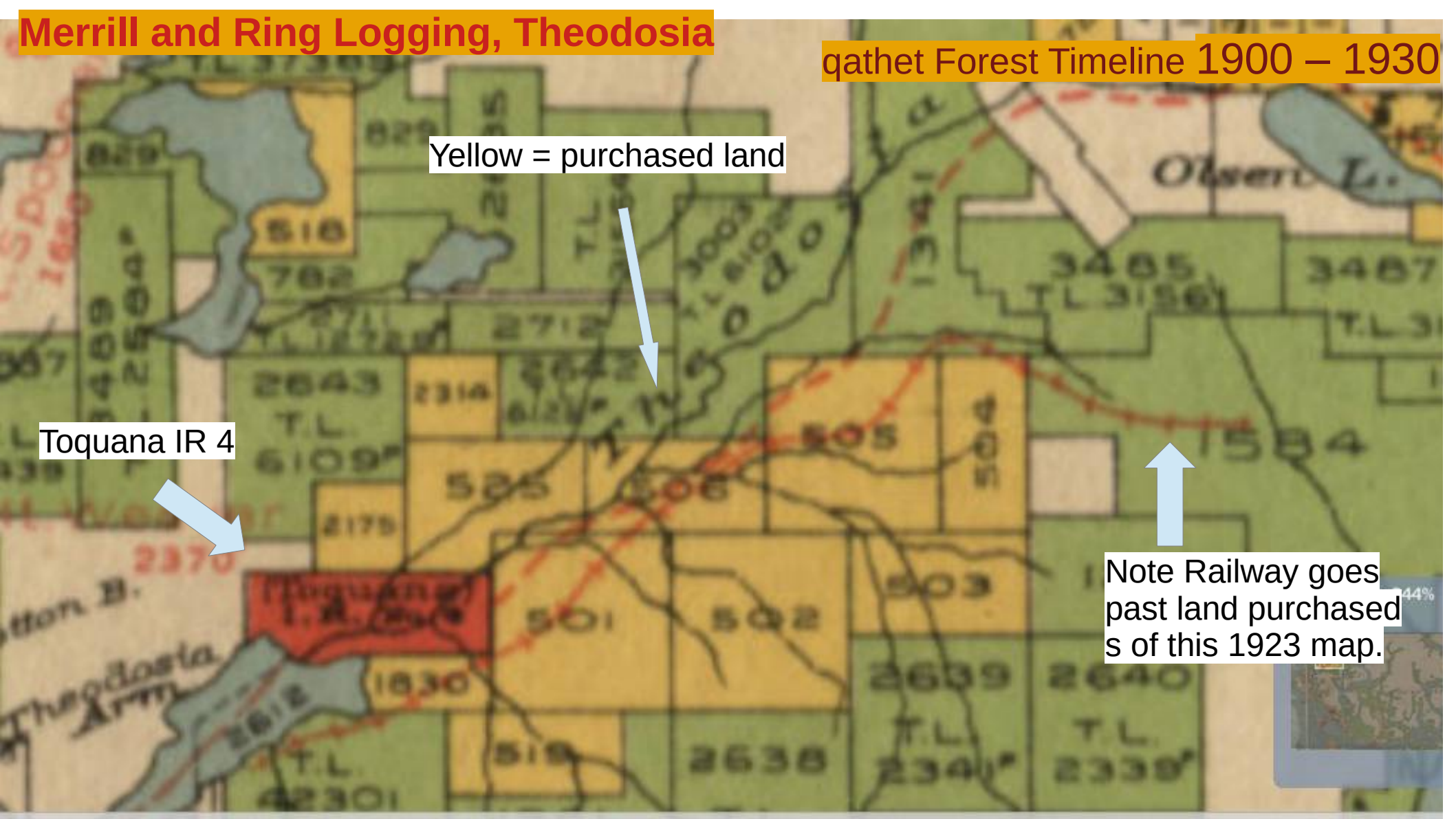
- Land purchased 1907, logged 1922-37, then 2000 era
- 400 men, 1.5 million m^3 in 16 years, 100k m^3 /year
- Much more land than Toquana IR 4
- Purple is proposed logging areas

qathet Forest Timeline 1900 – 1930



Merrill and Ring Logging, Theodosia

qathet Forest Timeline 1900 – 1930



Yellow = purchased land

Toquana IR 4

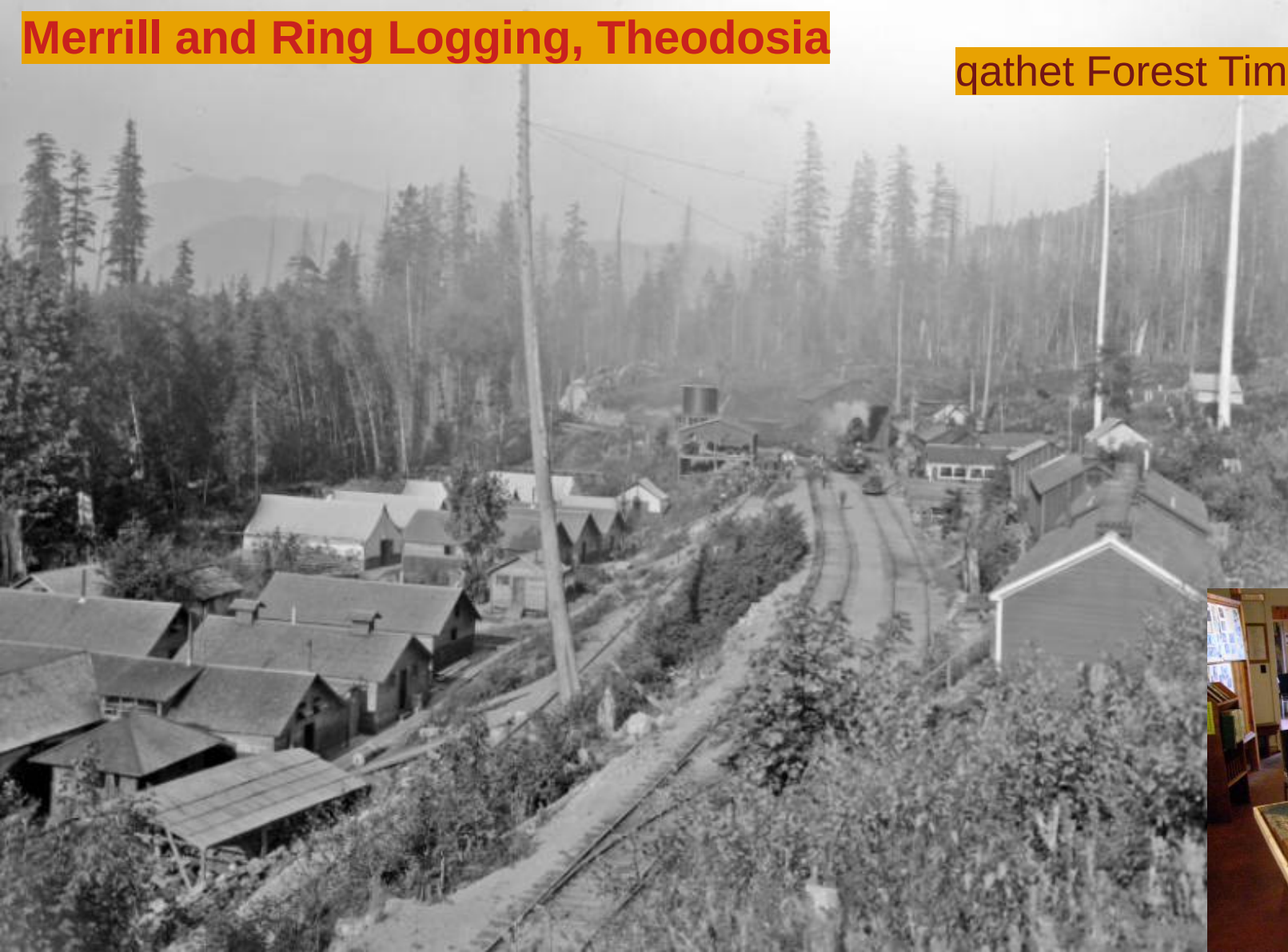
Note Railway goes past land purchased of this 1923 map.

Merrill and Ring Logging, Theodosia

qathet Forest Timeline 1900 – 1930

Photo -1926
Roozeboom

Peter Sansborne
Diorama 2007



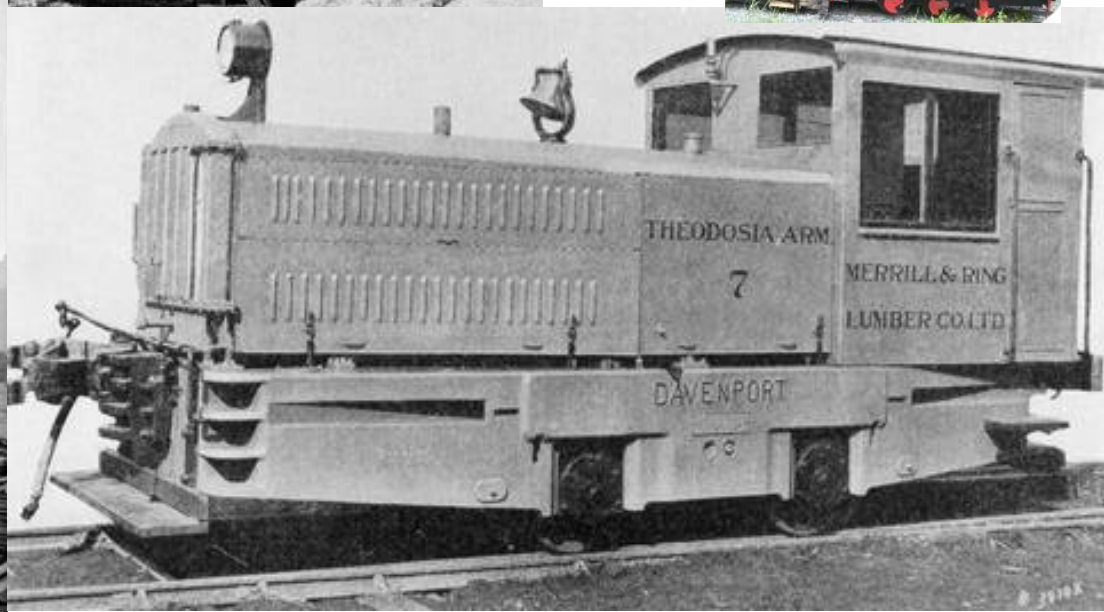
Merrill and Ring Logging, Theodosia

qathet Forest Timeline 1900 – 1930



1926 - Roozeboom

<http://prfhs.org/forestry-heritage/forest-eras/rail-era/theodosia-railroad>



Merrill and Ring Logging, Theodosia

qathet Forest Timeline 1900 – 1930



- 1926 –
Rooseboom

- 55 ton Shay #4
- two-truck, four driving axles
12.3 metres long.
- three cylinders
- tractive force of 22,580 pounds

Merrill and Ring Logging, Theodosia

qathet Forest Timeline 1900 – 1930

Since 1974 in Ottawa – Science Museum



At the Science and Technology Museum in Ottawa is

Merrill and Ring Logging, Theodosia

Museum Main

qathet Forest Timeline 1900 – 1930



Technologies 1900 - 1930

qathet Forest Timeline 1900 – 1930

Trucks begin to replace railroads



One donkey to both yard and load.

No boom yet.

Cornell had one of earliest trucks in PR, but this may not be Powell River

<https://www.facebook.com/groups/1265120183593102/>

Roads to Lund and Stillwater 1927

Digester 1930
Road to Lund



Digester 1930
Road towards
Thunder Bay



Road work progressing along the Powell River-Thunder Bay Highway. The scene shows the tractor at work widening the road near Lang Bay

Shakes, Shingle and Sawmills - Cranberry

qathet Forest Timeline 1900 – 1930



- 1915-1919
Mowat and
Wasser on
Mowat Bay

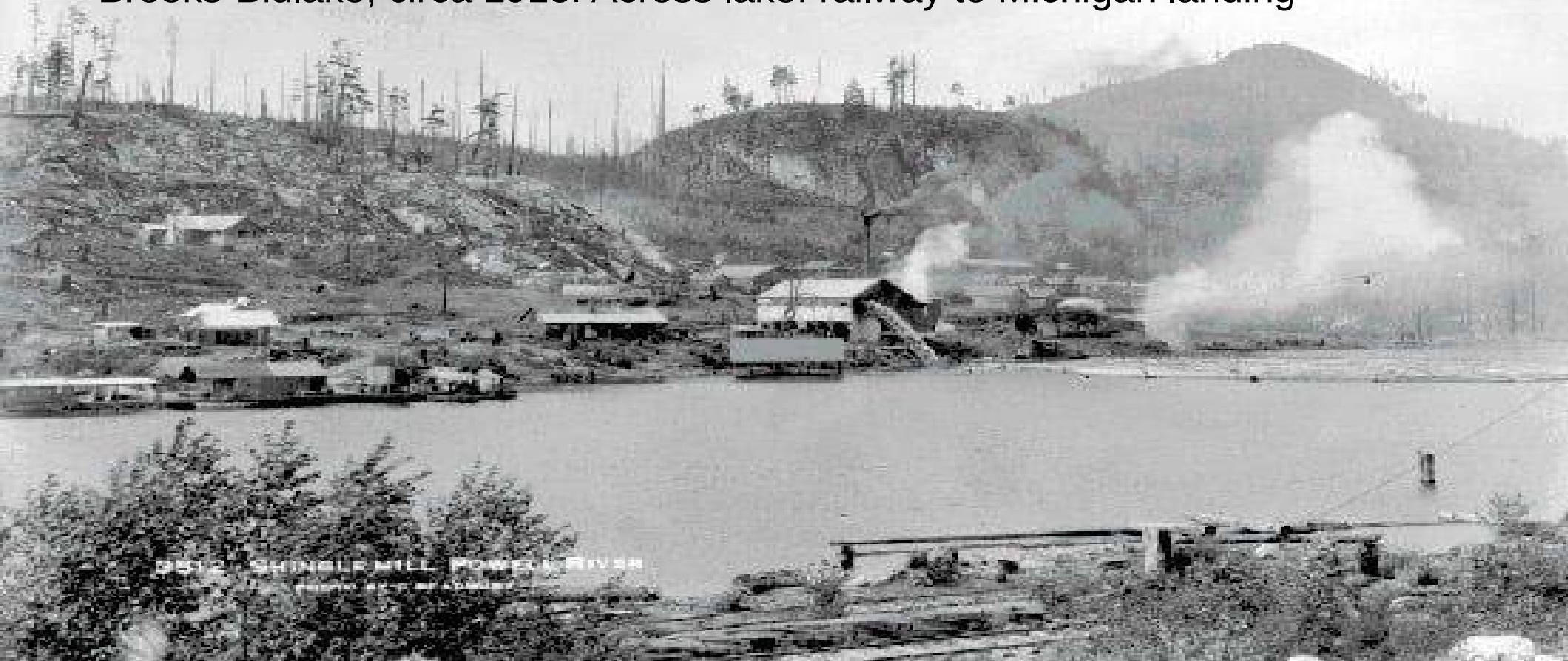
1919 Profitt,
later Marlatt on
Marlat Ave

Palmer and
Whipple

Shakes, Shingle and Sawmills – Powell Lake

qathet Forest Timeline 1900 – 1930

- Brooks-Bidlake, circa 1915. Across lake: railway to Michigan landing



0512 SHINGLE MILL POWELL RIVER BR

Title: Powell River Shingle Mill

Shakes, Shingle and Sawmills – Powell Lake

qathet Forest Timeline 1900 – 1930

- 1924 photo; burned 1951



Shakes, Shingle and Sawmills – Stillwater

qathet Forest Timeline 1900 – 1930



After BSO stopped logging in 1929, McNair Shingle Bolt Co. leased the railway and logged the Lois Lake area, shipping to Vancouver via Stillwater. (1932 photo)

Technologies

Shakes, Shingle and Sawmills – Texada – pacific Lime

qathet Forest Timeline 1900 – 1930

- Left: Sawmill carriage at Pacific Lime Sawmill Blubber Bay, 1898-1943
- Also Carter Bros. at Van Anda



Technologies and activities in the Forest

qathet Forest Timeline 1900 – 1930

Drag Saws – from 1920s

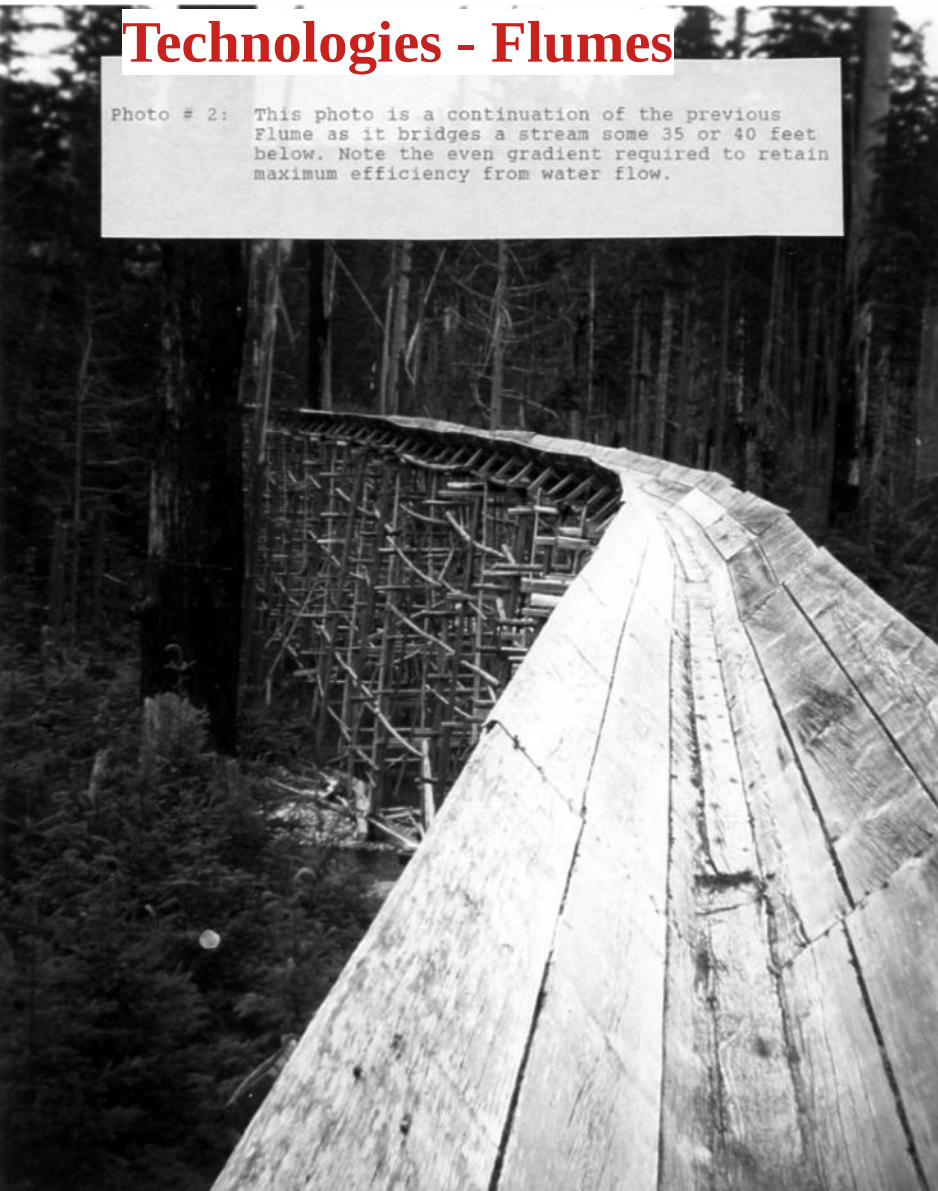
City Transfer a major firewood supplier in the 20s and 30s

*Forestry Museum photo left;
June 1930 Digester photo below*



Technologies - Flumes

Photo # 2: This photo is a continuation of the previous Flume as it bridges a stream some 35 or 40 feet below. Note the even gradient required to retain maximum efficiency from water flow.



Flumes
near
Giovanni
Lake
into
Powell
Lake

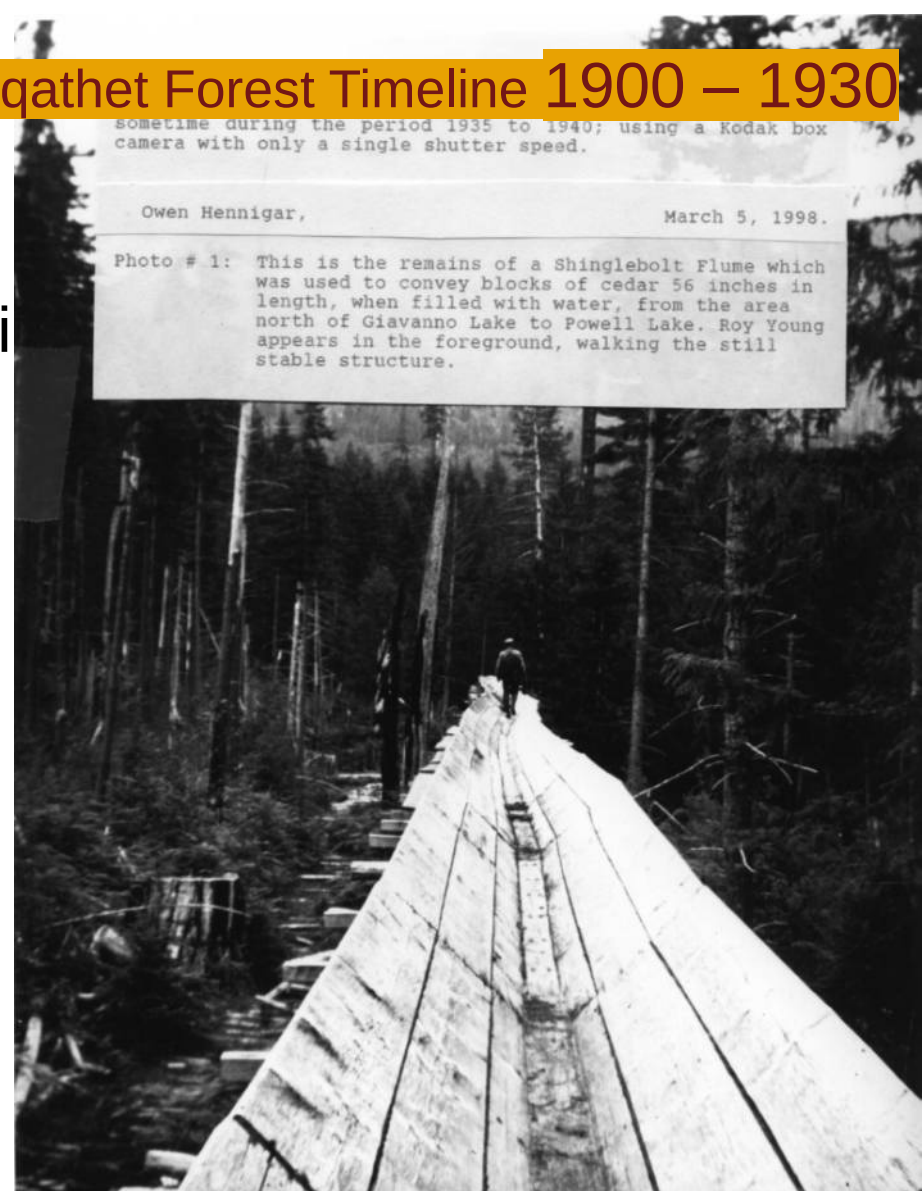
qathet Forest Timeline 1900 – 1930

sometime during the period 1935 to 1940; using a Kodak box camera with only a single shutter speed.

Owen Hennigar,

March 5, 1998.

Photo # 1: This is the remains of a Shinglebolt Flume which was used to convey blocks of cedar 56 inches in length, when filled with water, from the area north of Giavanno Lake to Powell Lake. Roy Young appears in the foreground, walking the still stable structure.



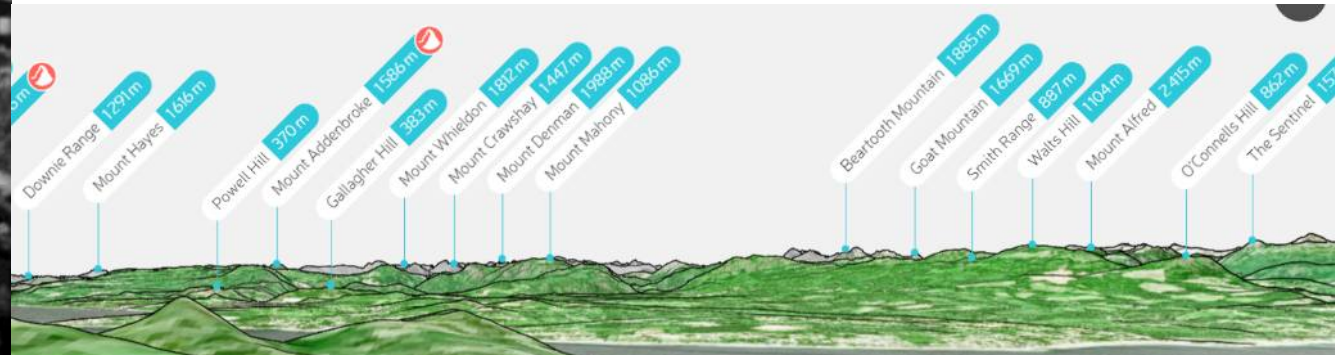
Activities in the Forest

Fire Lookouts

qathet Forest Timeline 1900 – 1930

1924 - Mount Pocahontas lower ledge
488.6 meters

- One of BCs earliest lookouts
- 12 x 12 foot cabin
- Cabin in service into the 1970s
- Had a great view of huge portions of the qathet forest
- <http://www.texadaheritagesociety.com/Musings/2015/Aug/Pocahontas%20Lookout2.pdf>



Activities in the Forest

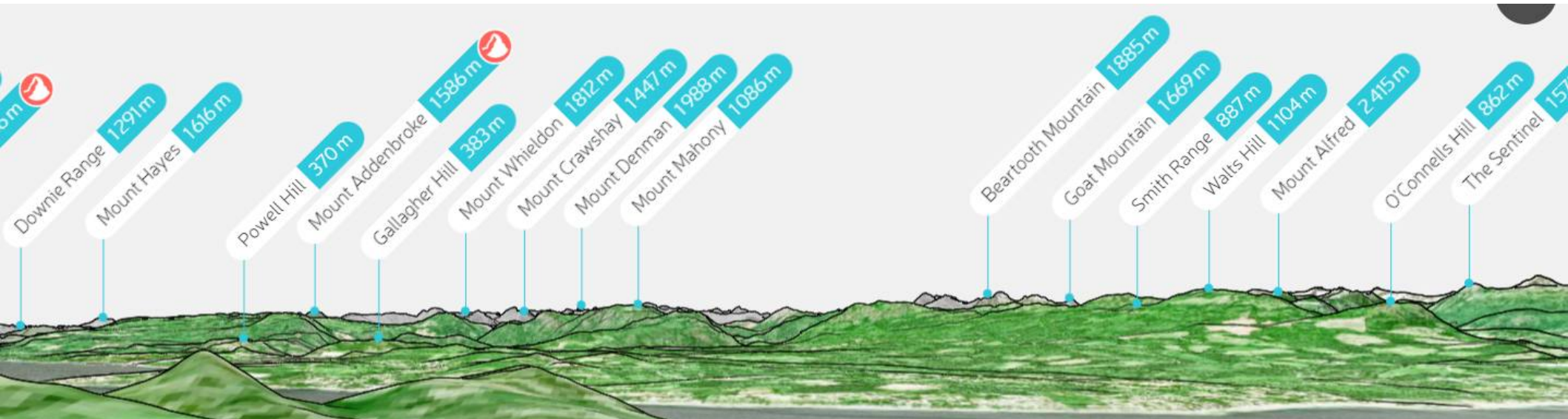
Fire Lookouts

qathet Forest Timeline 1900 – 1930

Mount Pocahontas looking North

Powell Hill (Scout Mountain)
Gallagher Hill
Mount Mahoney

Bear Tooth
Smith Range
Walt's Hill
Mount Alfred

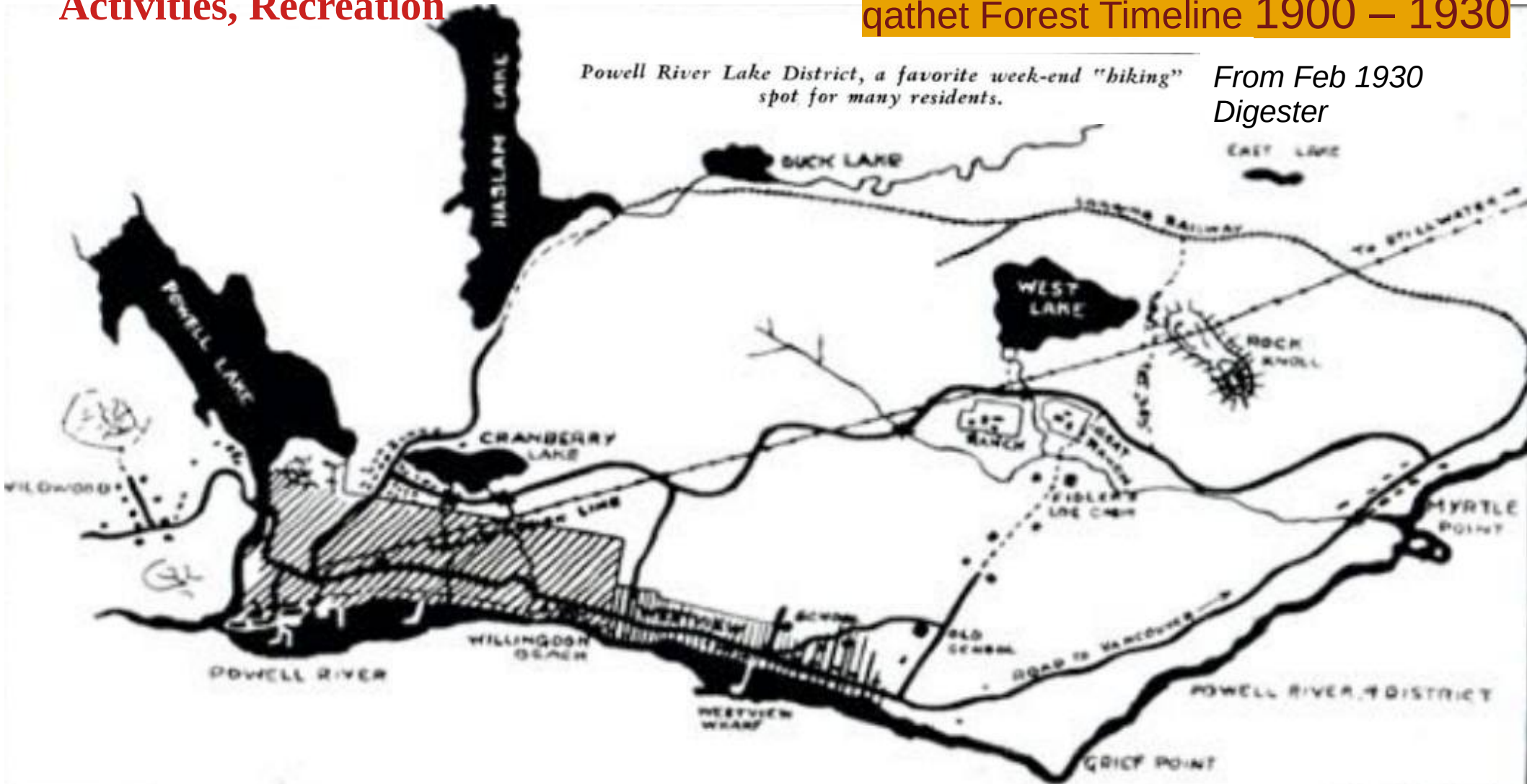


Activities, Recreation

qathet Forest Timeline 1900 – 1930

Powell River Lake District, a favorite week-end "biking" spot for many residents.

*From Feb 1930
Digester*



Wildlife

qathet Forest Timeline 1900 – 1930

Recreation Hunting popular

Rod Lemay
1967.1.10,
Animals wolves
(pelts), two
hunters booty,
1910



"ENEMIES"





Rod LeMay

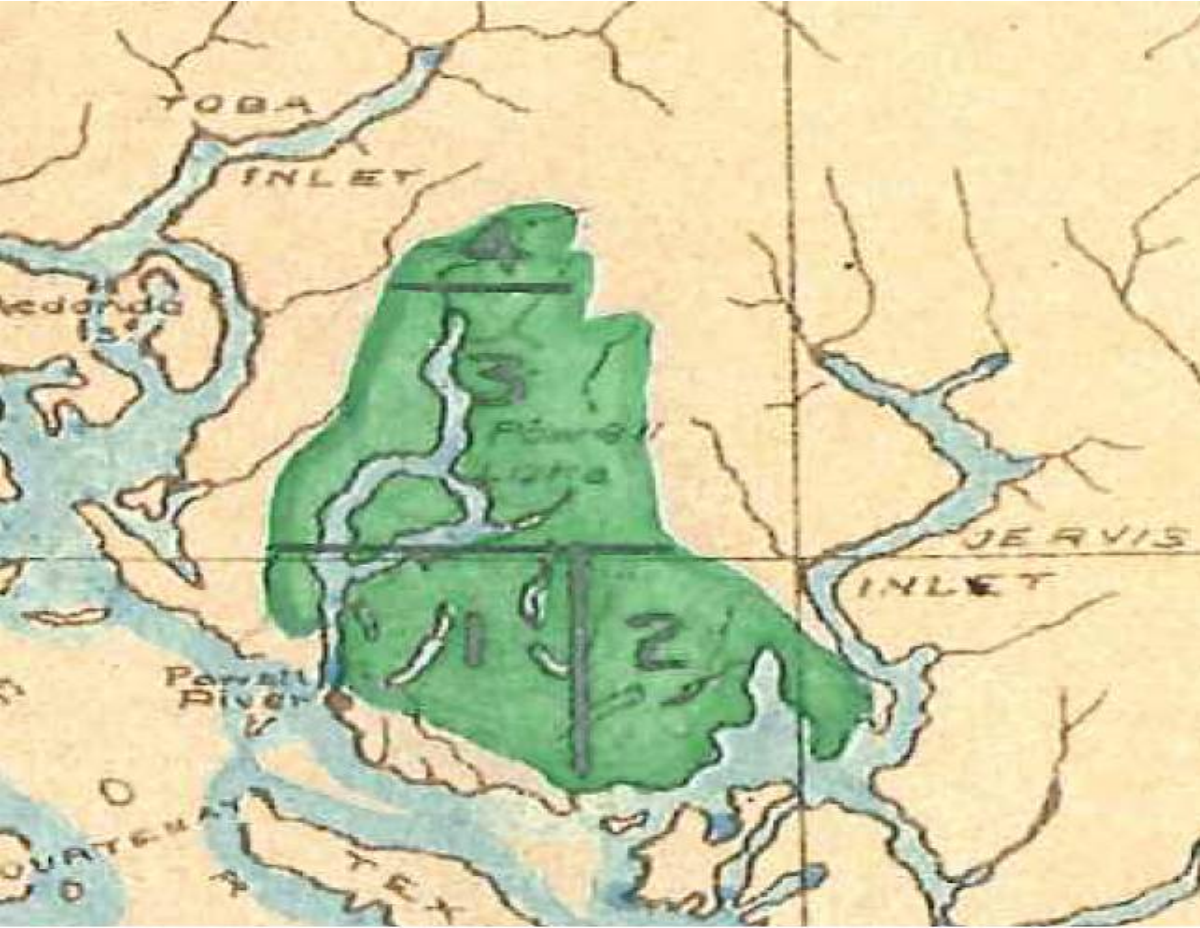
Mountain
goat
BCA D-02941

Mountain Goat Powell Lake B.C. R. LEMAY

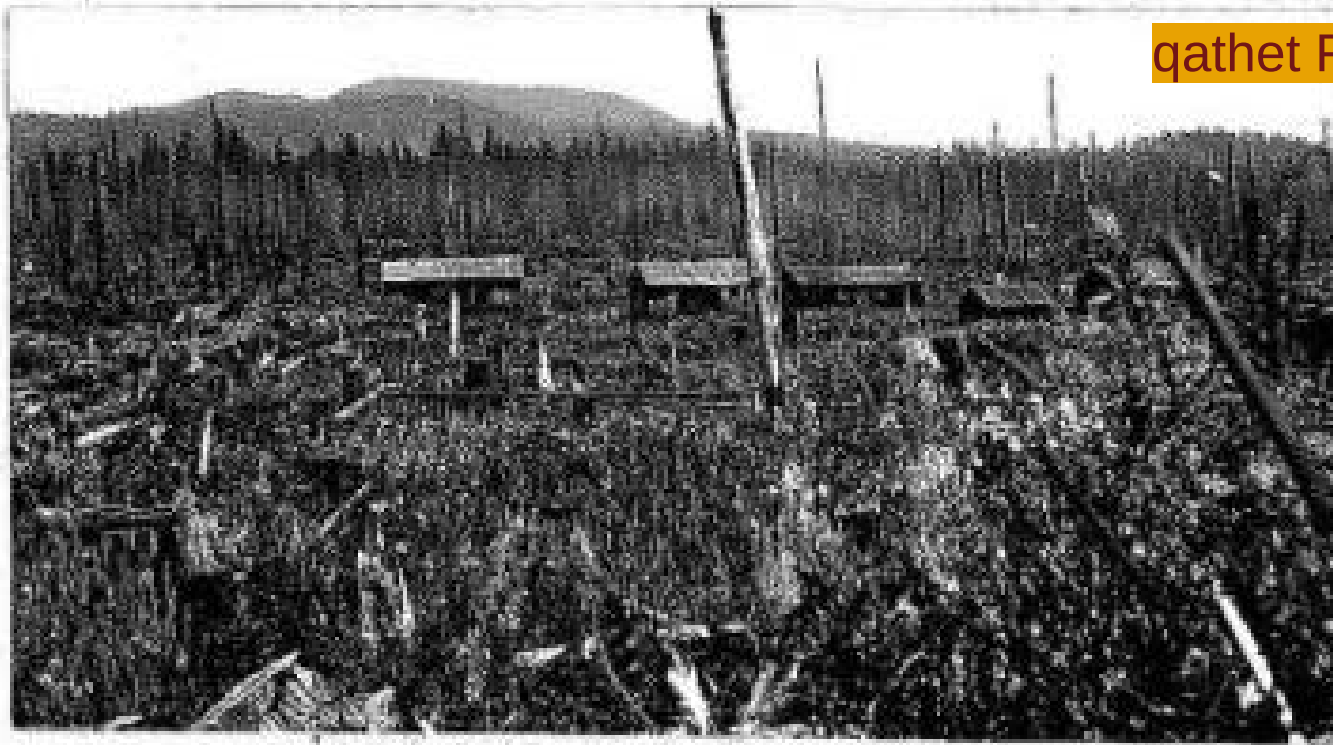
- **Changing Values/Policies**
 - Gormely Survey 1931
 - Lois Lake raised
 - Sloan Royal commission 1947 – sustainable Yield
- **Technologies and activities in the qathet Forest**
 - Chain Saws
 - Logging trucks continue to replace railroads
 - Gas/Diesel engines replace Steam Donkeys
 - Depression, then WWII drives local activities

Powell Provincial Forest Survey R.27 by Gormely - 1931

qathet Forest Timeline 1930 – 1960



- Powell, Lois, Haslam lake watersheds + Hotham Sound
- All but Haslam watershed became TFL 39
- <https://archive.org/details/bib37283-PowellForestHistory1931-Gormely>



- Duck Lake area 1931
- Gormely survey

Abandoned logging camp.
Lot 913 - looking N.E. from vicinity of Duck
Lake - Logged and burned - heavy ground cover -
no reproduction. Compartment 6. Timber in
Compartment 4 Sub A in background.

Lois Lake

gather timeline 1930 – 1960

Gordon Pasha
Lakes before
the dam

Very rough
concept sketch
of flooded area

Bloedel =
Khartoum =
3rd lake



Lois Lake dam

qathet Forest Timeline 1930 – 1960

Crib Dam In 1931

<https://www.facebook.com/groups/253493791337051/permalink/5352879621398417/>



Lois Lake dam

qathet Forest Timeline 1930 – 1960

First Gordon pasha lake before the dam *Digester photo 1930*

The old Brooks-Scanlon sawmill at the outlet of the first Gordon Pasha Lakes. When this mill was in operation, bog fuel as a commercial product was almost unknown.



Lois Lake dam

qathet Forest Timeline 1930 – 1960

Main Dam since 1942



Lois Lake dam

qathet Forest Timeline 1930 – 1960

Camp 3, at Lois River, on the hill facing the north portal of the tunnel now under construction. This land was logged many years ago by Brooks-Scanlon-O'Brien.

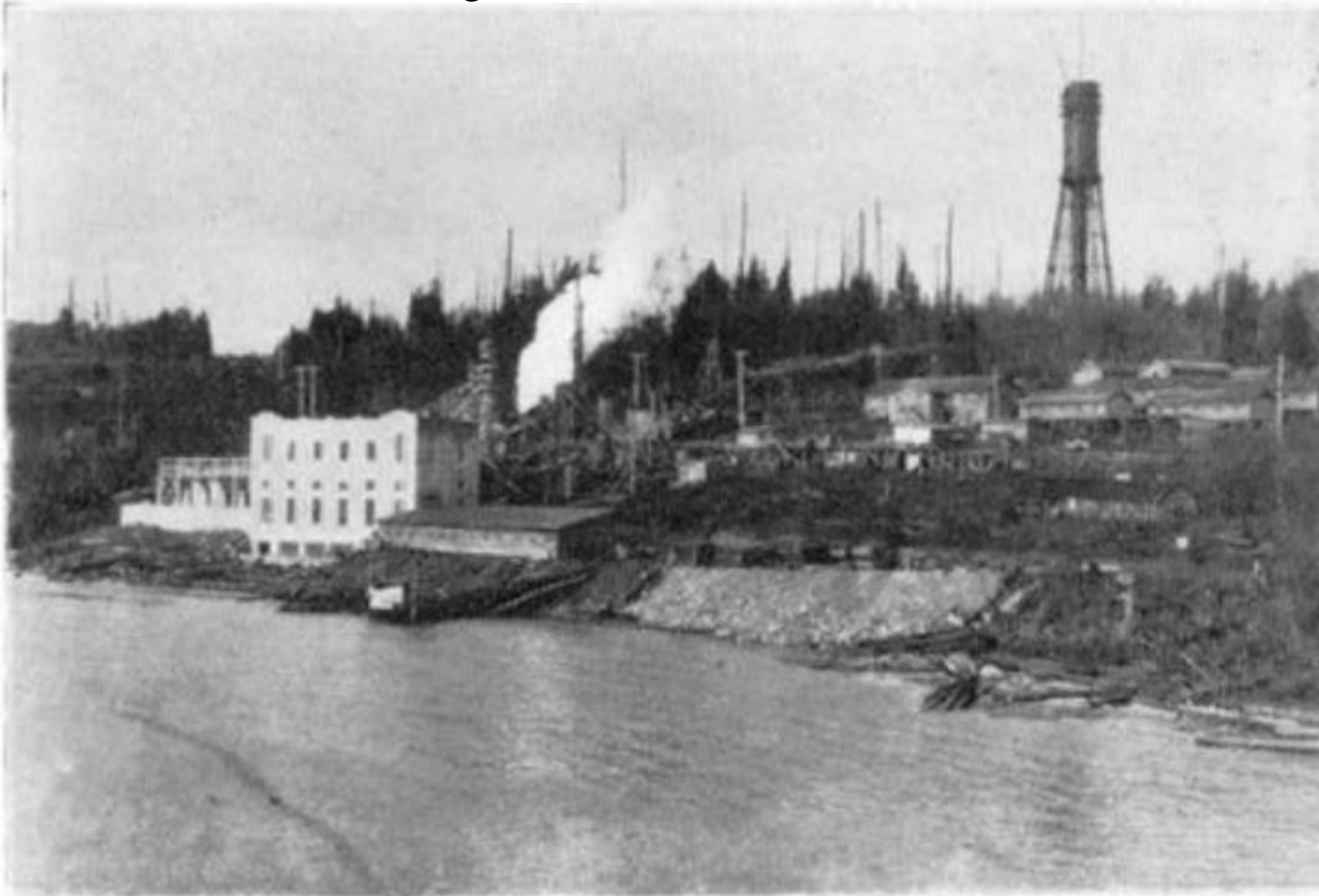
From March 1930 Digester



Lois Lake Power

qathet Forest Timeline 1930 – 1960

From Feb 1931 Digester



The focal point of construction at Lois River. In the foreground is the fine new power house overlooking Malaspina Straits. On the right is the transmission line, and in the background the surge tank.

Technologies and activities in the Forest

Chain Saws – from 1940

qathet Forest Timeline 1930 – 1960



Logging Trucks



GMS
Logging
Truck with
load of logs
on Gallagher
Hill behind
Mowat Bay,
1940s. (ID
1967.1.5981)

Technologies Technologies and activities in the Forest

qathet Forest Timeline 1930 – 1960

Logging Arch

Johnson family photo on facebook



WB Trail



Trucks

1920s

Small
logging
trucks
built on
frames
like this



Activities in the Forest

qathet Forest Timeline 1930 – 1960

Fire Lookouts – Tin Hat

1949? Tin Hat
tower built

Photo taken 1965

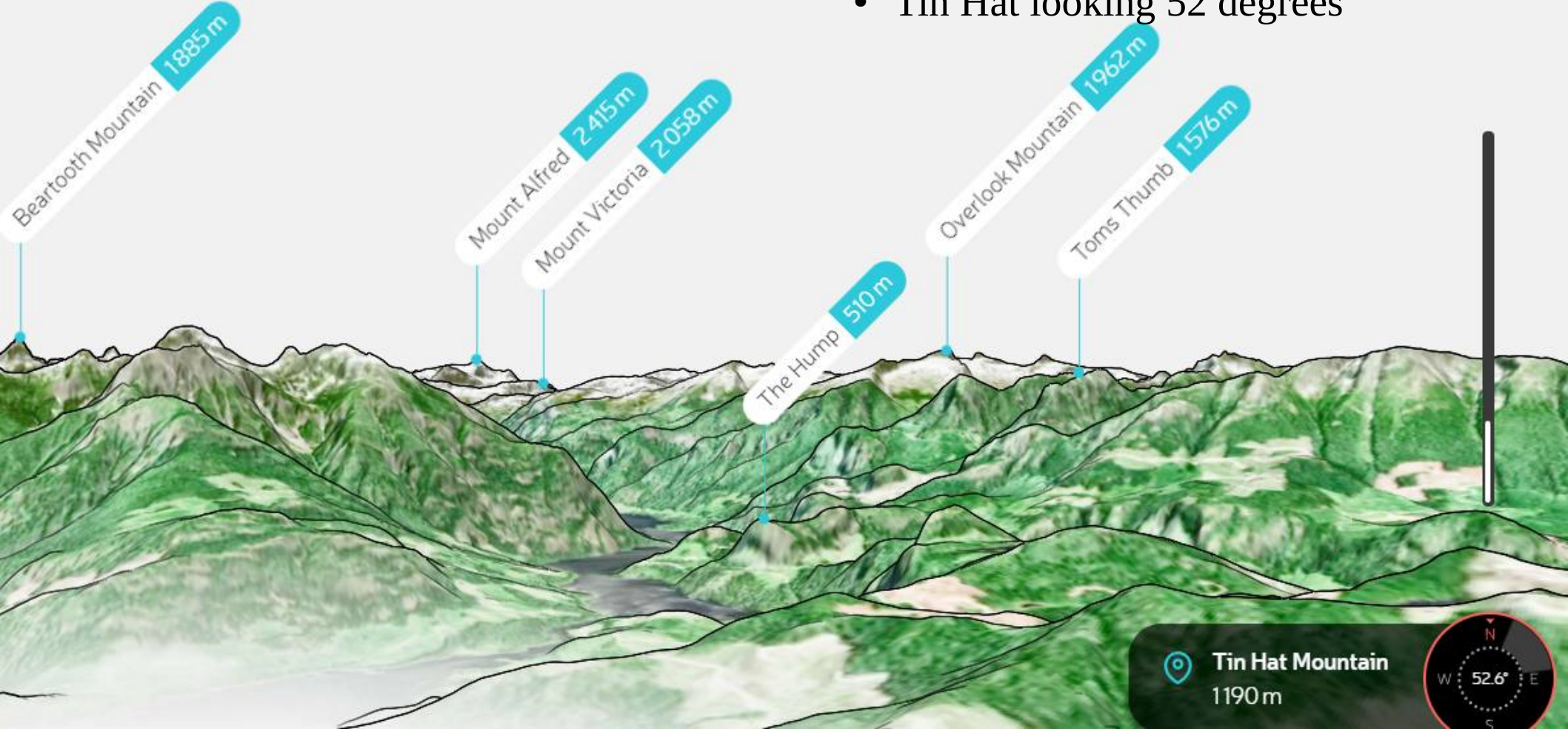


Activities in the Forest

Fire Lookouts

qathet Forest Timeline 1930 – 1960

- Tin Hat looking 52 degrees

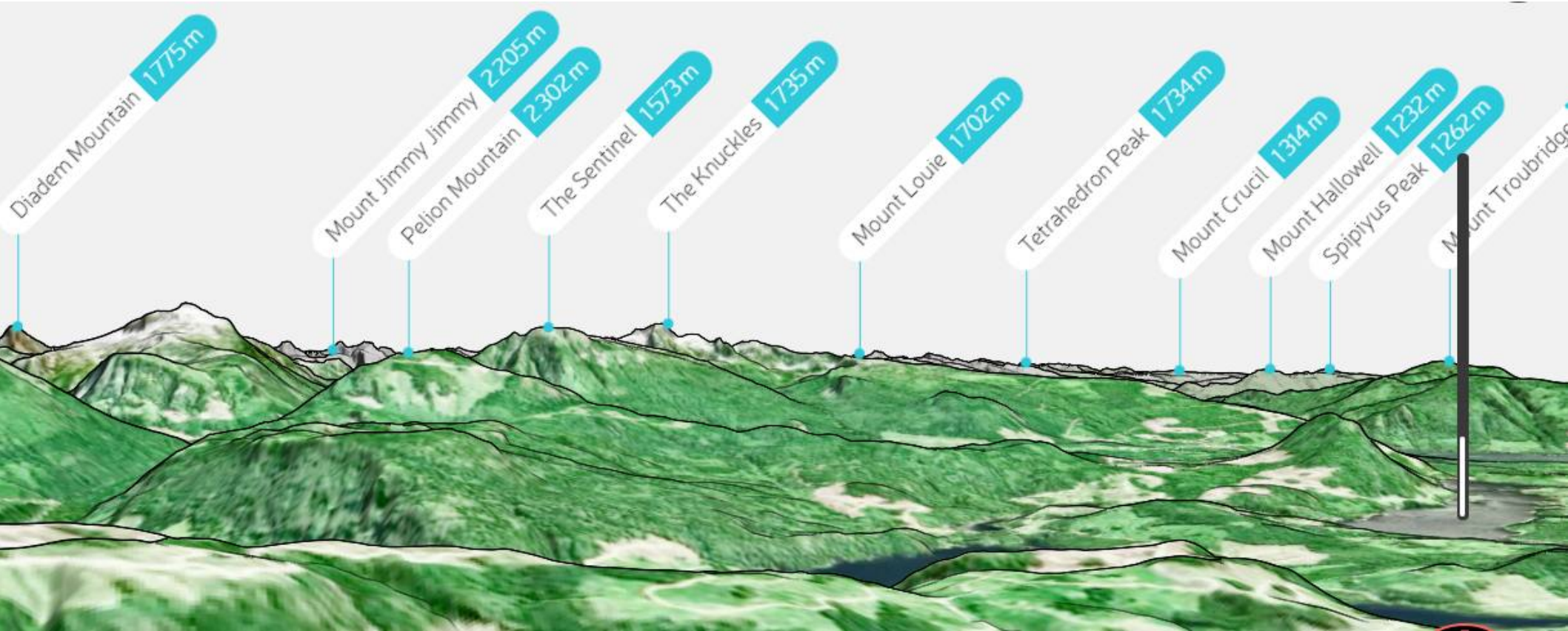


Activities in the Forest

Fire Lookouts

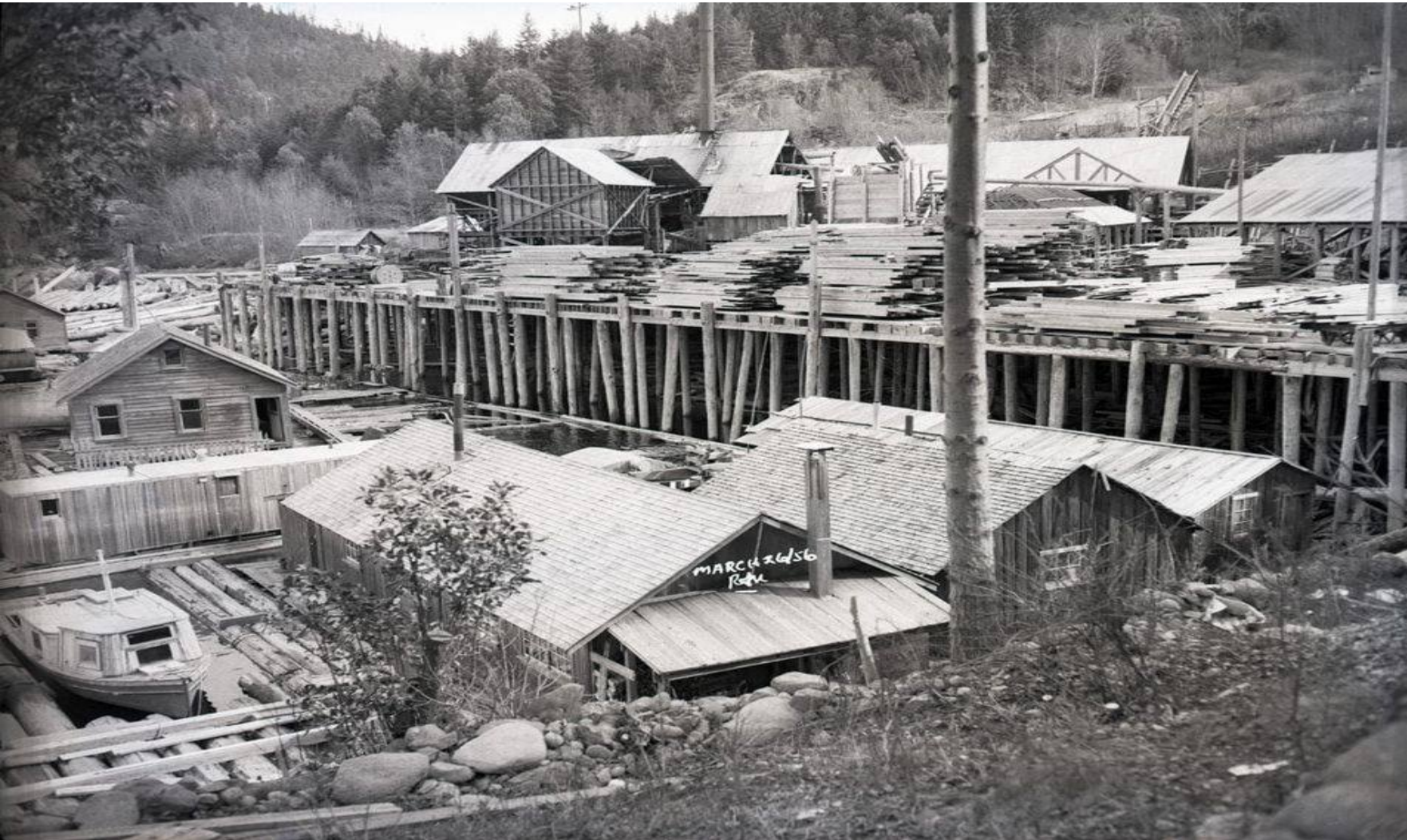
qathet Forest Timeline 1930 – 1960

- Tin Hat looking 113 degrees



Anderson Mill – Block Bay

qathet Forest Timeline 1930 – 1960



Block Bay used from Sayward days (1907 railroad) to the present day

Anderson Mill moved to Mowat Bay but never operated – no City permission

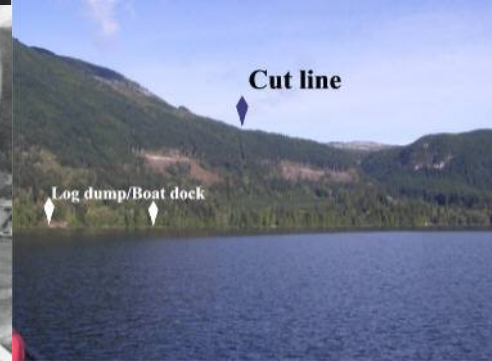
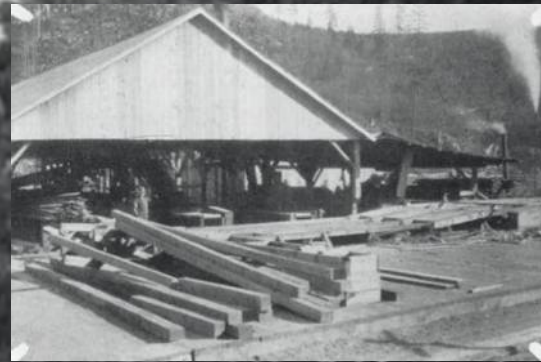
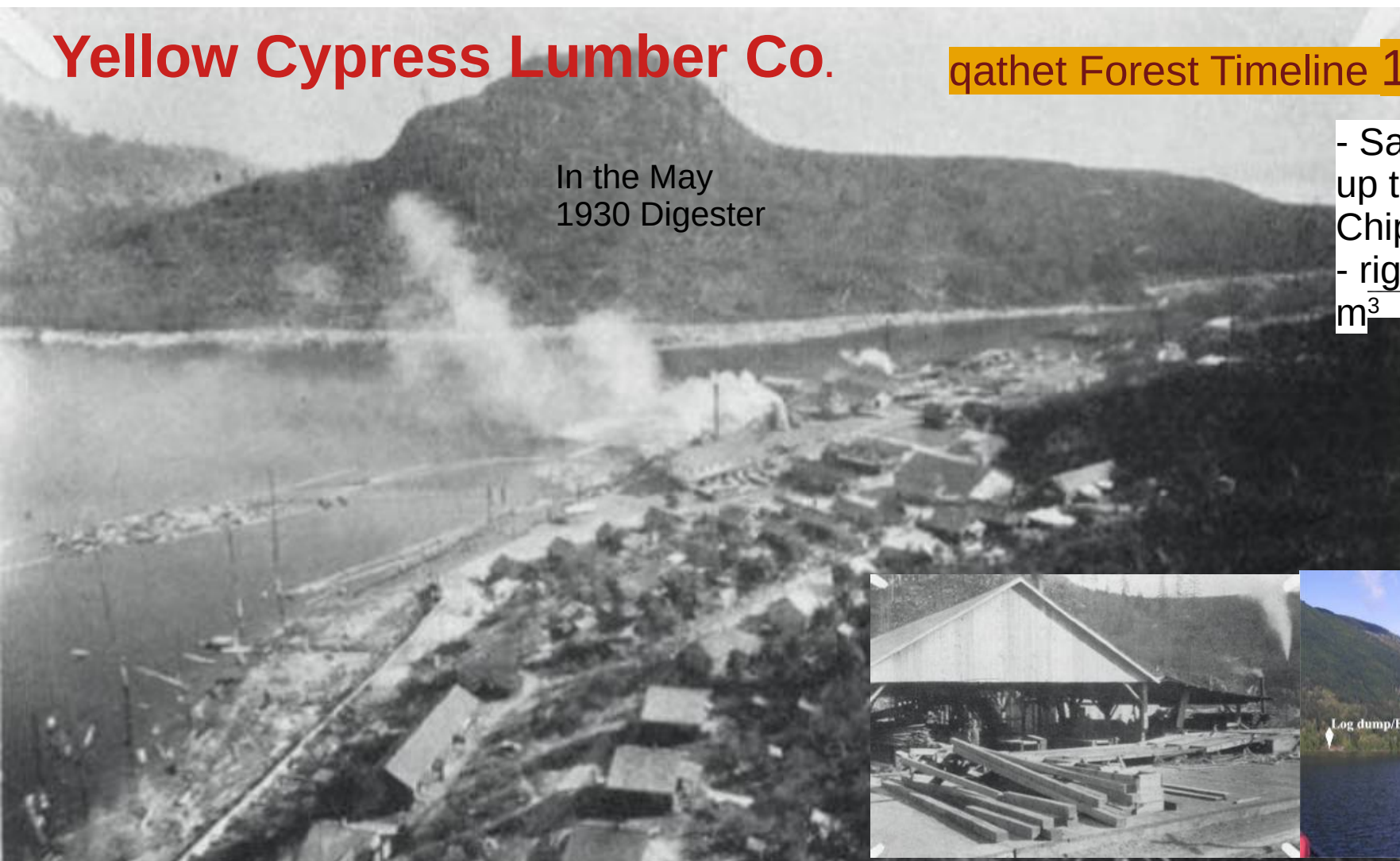
Museum restoration project

Yellow Cypress Lumber Co.

qathet Forest Timeline 1930 – 1960

In the May
1930 Digester

- Sawmill 13 km
up the lake near
Chippewa Bay
- rights to 50,000
m³



The home of the Yellow Cypress Lumber Company on Powell Lake, showing mill in the background and employees' houses in the foreground.

fds

POLE WHEEL EXHIBIT



In the late 1920's there was a logging camp above Chippewa Bay on Powell Lake. The Pole Wheel Exhibit on display here is part of the remnants of that operation. The original timber license was held by an American who lived at one time around Chippewa Lake in Mecosta County Michigan. Perhaps that is where the bay got its name!



We know that the area had a lot of yellow cedar in it. An incline was used to lower the loaded cars down to the lake. Instead of using steel railway track they used wooden poles which were readily available. Hence the large flanged wheels on the cars to properly navigate the uneven poles.



The steam winch also known as a donkey is still in its original location high above the bay, as well as another donkey that was used to drag the logs to a central location to be loaded on to the cars. There was an article from the Powell River News dated August 2, 1928... referred to the "Yellow Cedar Company" stating that there was to be a new sawmill built at Powell Lake to especially handle yellow cedar. At present 28 men are employed at the Chippewa Bay operation and they are utilizing the sawmill at Cranberry Lake employing 86 men sawing lumber for the new Patricia Theatre.



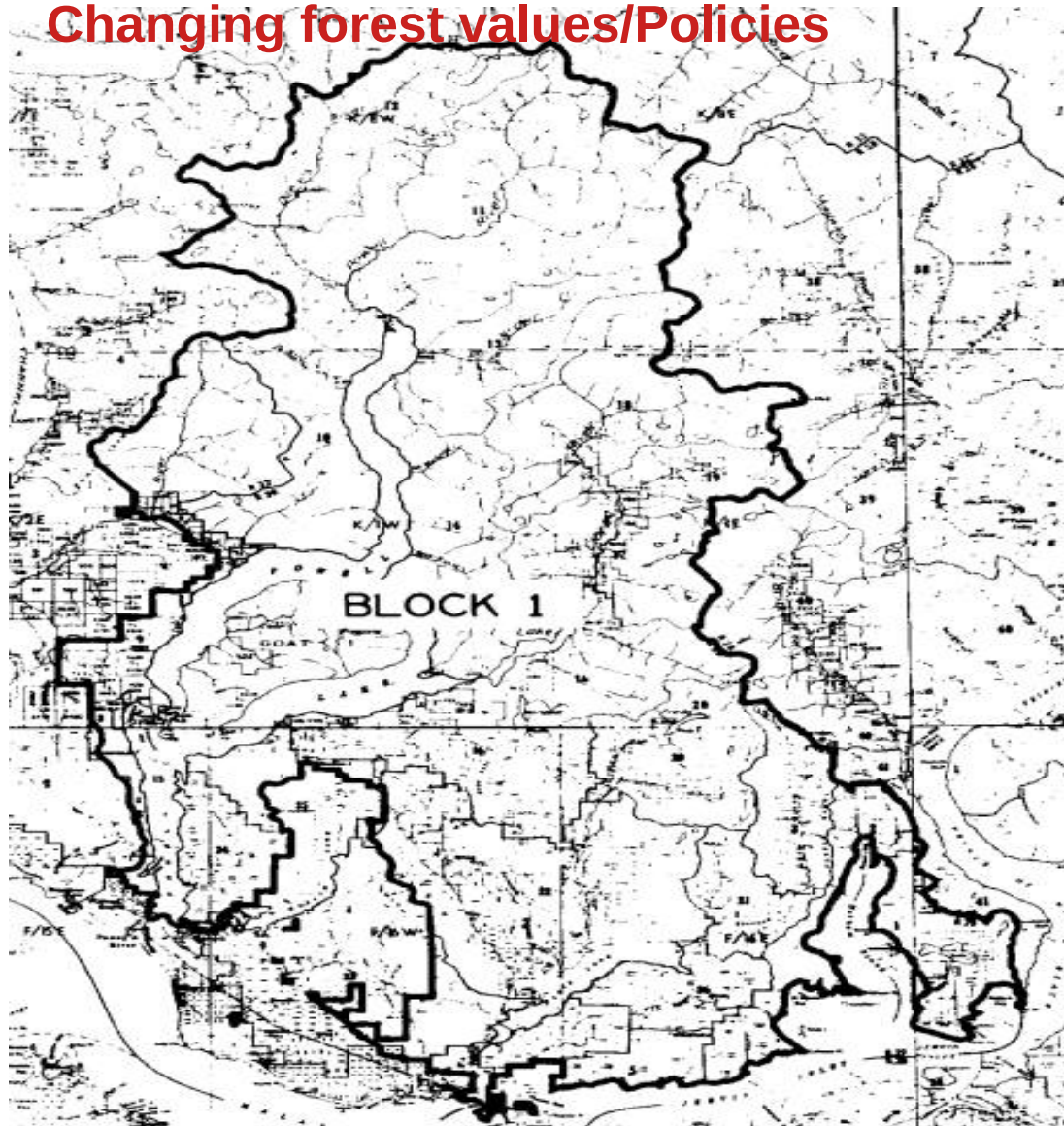
Today if one travels up the lake as you pass Chippewa Bay the "cut line" created by the incline is still readily visible.

- Logpond - 1950s

qathet Forest Timeline 1930 – 1960



- **Changing Values/Policies**
 - **1961** - MacMillan Bloedel and Powell River TFL 39,
 - Required to source 50% logging to small business
 - Royal commission 1976 – sustainable Forestry - AAC
- **Technologies and activities in the Forest**
 - Significant second growth logging begins
 - Helicopter logging



qathet Forest Timeline 1960 – 1990

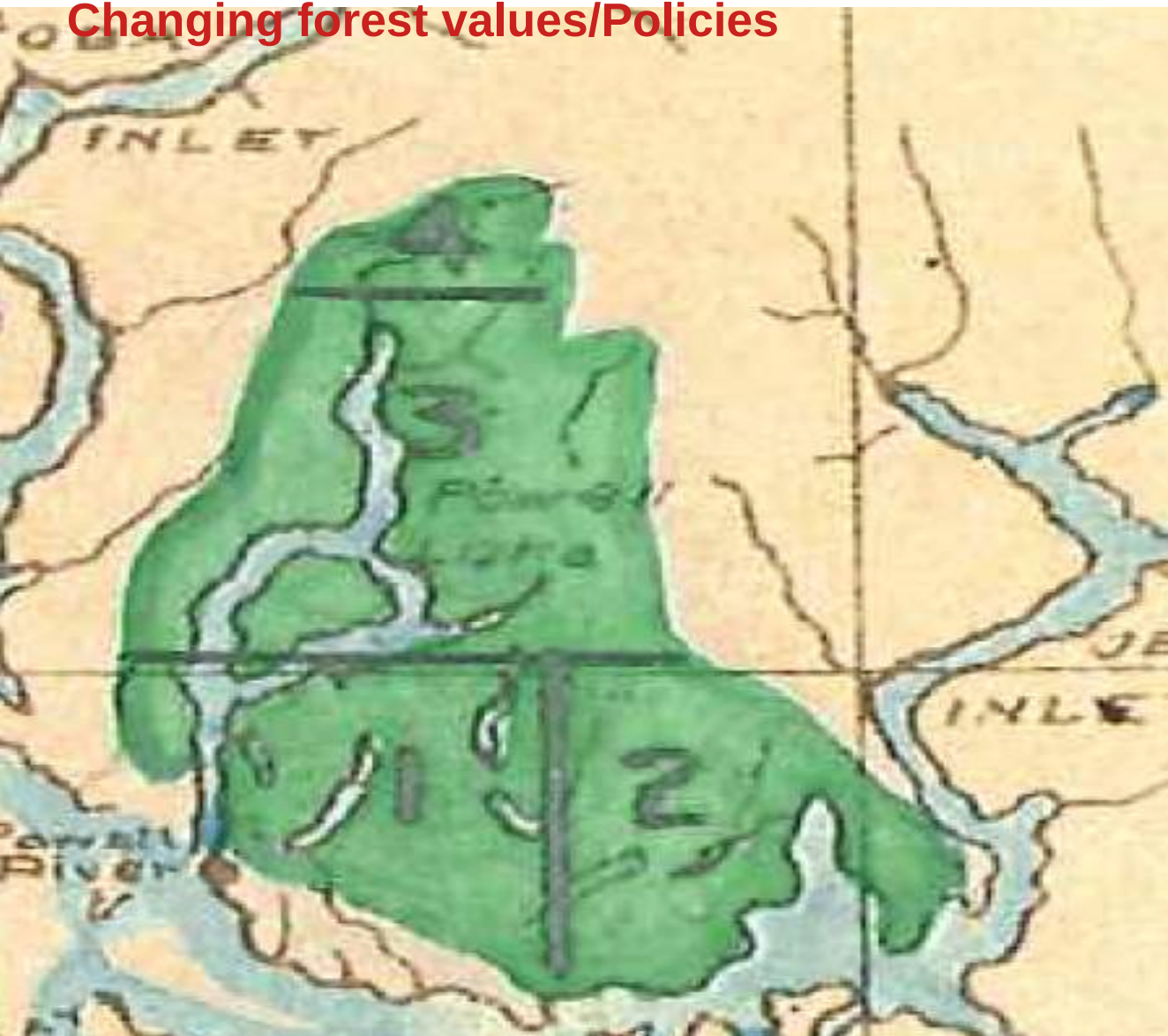
MacMillan Bloedel and Powell River Licence 1961

For sustained yield management

<https://www2.gov.bc.ca/assets/gov/farming-natural-resources-and-industry/forestry/timber-tenures/tree-farm-licence/licences/tfl-39-lic-01-october-27-1961.pdf>

50% by contract, 5400 ha. private

Changing forest values/Policies



**Compare to the
Gormely Survey
1931**

Powell Forest

<https://archive.org/details/bib37283-PowellForestHistory1931-Gormely>

Technologies

qathet Forest Timeline 1960 – 1990

Spars, Grapple Yarding

Need local
histories



Activities

Logging Sorting

qathet Forest Timeline 1960 – 1990

- Stillwater log sort
- Owned by Olympic Forest Products since 1960s (Welch Family)



Logging Trucks

gathet Forest Timeline 1960 – 1990

- #15 A Byrne Trucking, in Powell River. Pulling into the Weldwood Log Sort. Loaded by Barry Wilson with a 7220 super snorkle E Branch, goat lake. Driver, Dan Hawkins



Logging Trucks

gathet Forest Timeline 1960 – 1990

- Butler Bros truck, hauling out of Goat Lake "Powell River" approx 1978 owned by A Byrne Trucking. Driver Bob Miller



Logging Firms

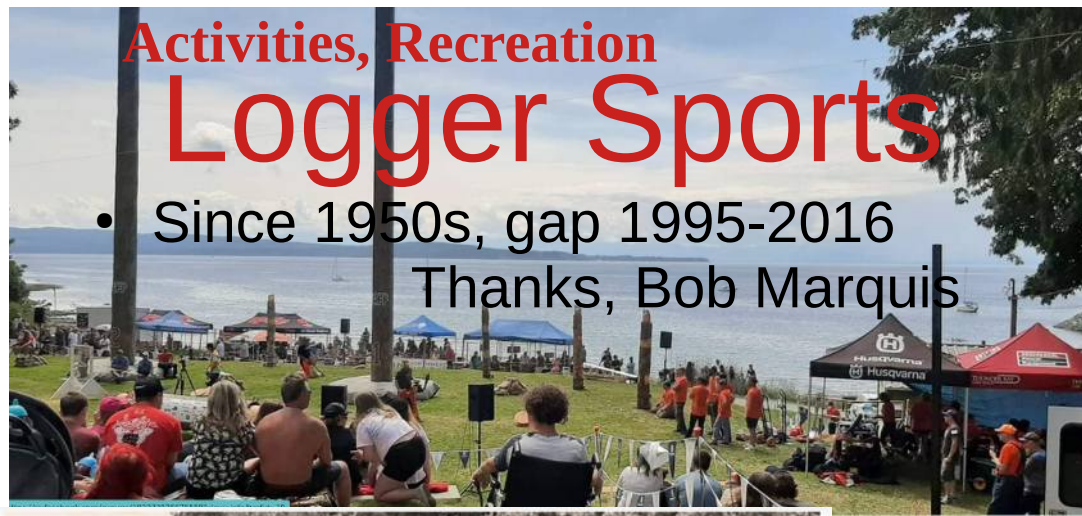
A very incomplete List:

- A Byrne, Kip Brown Trucking,
- Percy Logging 1956, head of Powell Lake, Powell Daniels
- Alaska Pine
- Doman, Pacific Forest Products
- Granite Lake logging
- Goat Lake Forest Products
- Mahood Logging
- Olympic Forest Products (Welch group)
- Brett
- CANFOR (Brittain and Jervis inlet; Homfray and Toba areas)

More research needed for this era!

Activities, Recreation Logger Sports

- Since 1950s, gap 1995-2016
Thanks, Bob Marquis



qathet Forest Timeline 1960 – 1990



1957

Two men log rolling participate in logging sports at Willingdon Beach in Powell River in 1957. Photo courtesy Powell River Historical Museum and Archives



1975

Obstacle pole bucking competition a Logger Sports at Palm Beach in 1975. Photo courtesy Powell River Historical Museum and Archives

- **Changing Values/Policies – recent history**
 - 1990s forward – more Recreation in the Forest
 - 1987-1992 Pressures for sustainable Forests, not timber yield
 - 1998 MacBlo / Weyerhaeuser Management Plan #8 (2001-2006)
 - 2003 Forest Revitalization Act (FRA) leads to Tenure Changes: Community forests, BC Timber Sales and Tla'Amin forest management
 - 2005 Realignment Western Forest Products, Island Timberlands
 - 2016 Tla'amin Final Agreement; 2007 UNDRIP, 2019 BC DRIPA
- **Technologies and activities in the Forest**
 - 2002 feller buncher, helicopter logging
 -

1998-2004 MacBlo / Weyerhaeuser

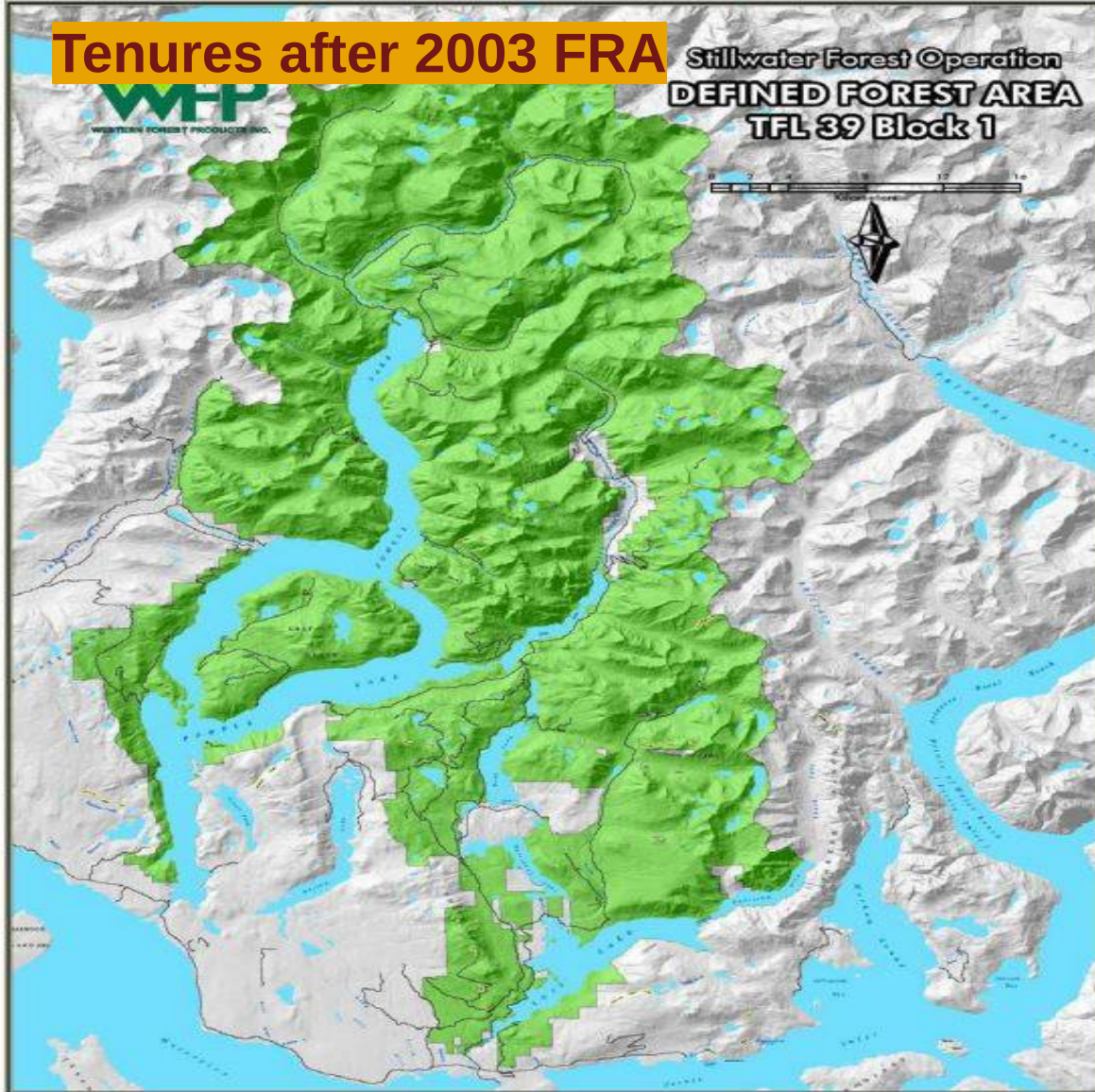
Management Plan 8 for 2001-2006 – Block 1 - Stillwater Timberlands

Integrated Resource Management- response to environment movement

- commitments to non-timber values. Soils, water, cultural heritage, wildlife, biodiversity, recreation and visual landscapes.
- Small Business Forest Enterprise Program (SBFEP)
- variable retention
- International Standards, local advisory group
- carried on by WFP

•

Tenures after 2003 FRA



qathet Forest Timeline 1990 – 2020

- Western Forest Products TFL 39 Block 1
- Reduced 20% in 2003 by FRA
- Private lands moved to Island Timberlands in 2005
- Block 1 now covers approximately 70,000 hectares of productive forests, of which approximately
- 32% are designated as conserved. The sustainable AAC for Block 1 is 469,200 m3.
-

Tenures after 2003 FRA



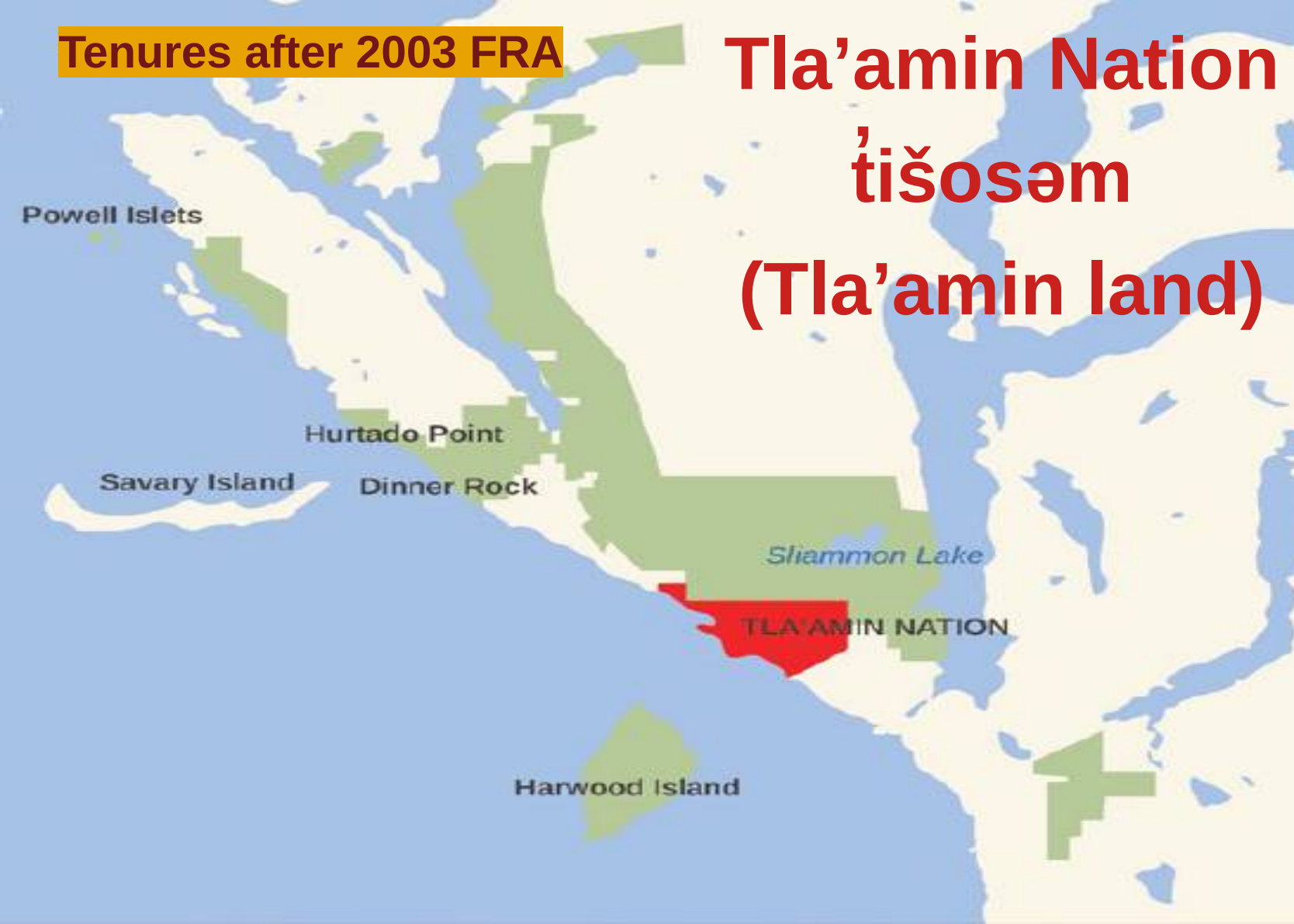
gathet Forest Timeline 1990 – 2020

- In response to the US/Canada Softwood Lumber dispute
- **BC Timber Sales (BCTS)** manages 20% of the Powell Forest (cross hatched areas)
- [https://www.for.gov.bc.ca/ftp/TCH/external/publish/FSP/PowellR/FSP/BCTS%20SCNRD%20FSP%20\(Effective%2020180528\).pdf](https://www.for.gov.bc.ca/ftp/TCH/external/publish/FSP/PowellR/FSP/BCTS%20SCNRD%20FSP%20(Effective%2020180528).pdf)

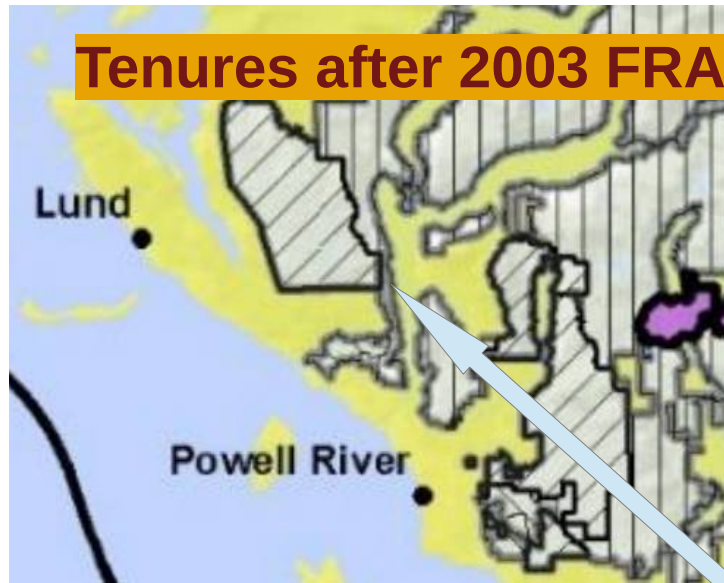
Tenures after 2003 FRA

Tla'amin Nation t̓išosəm (Tla'amin land)

Nation-to-
Nation
relationship
Canada
and BC



Tenures after 2003 FRA



K3P Tla'amin
City: K3G

Community Forests

- Tla'amin K3P
 - 12,681 Ha., AAC 81,900
- City: K3G
 - 7,109 ha., AAC 35,000



Helicopter logging

qathet Forest Timeline 1990 – 2020



Oceanview
helicopters
Windfirming
2009



Heli-logging at Khartoum
Lk near Powell River, in
a Canadian Air Crane S-
64, 1996. Keith Thirkell
photo

Fire Suppression

qathet Forest Timeline 1990 – 2020

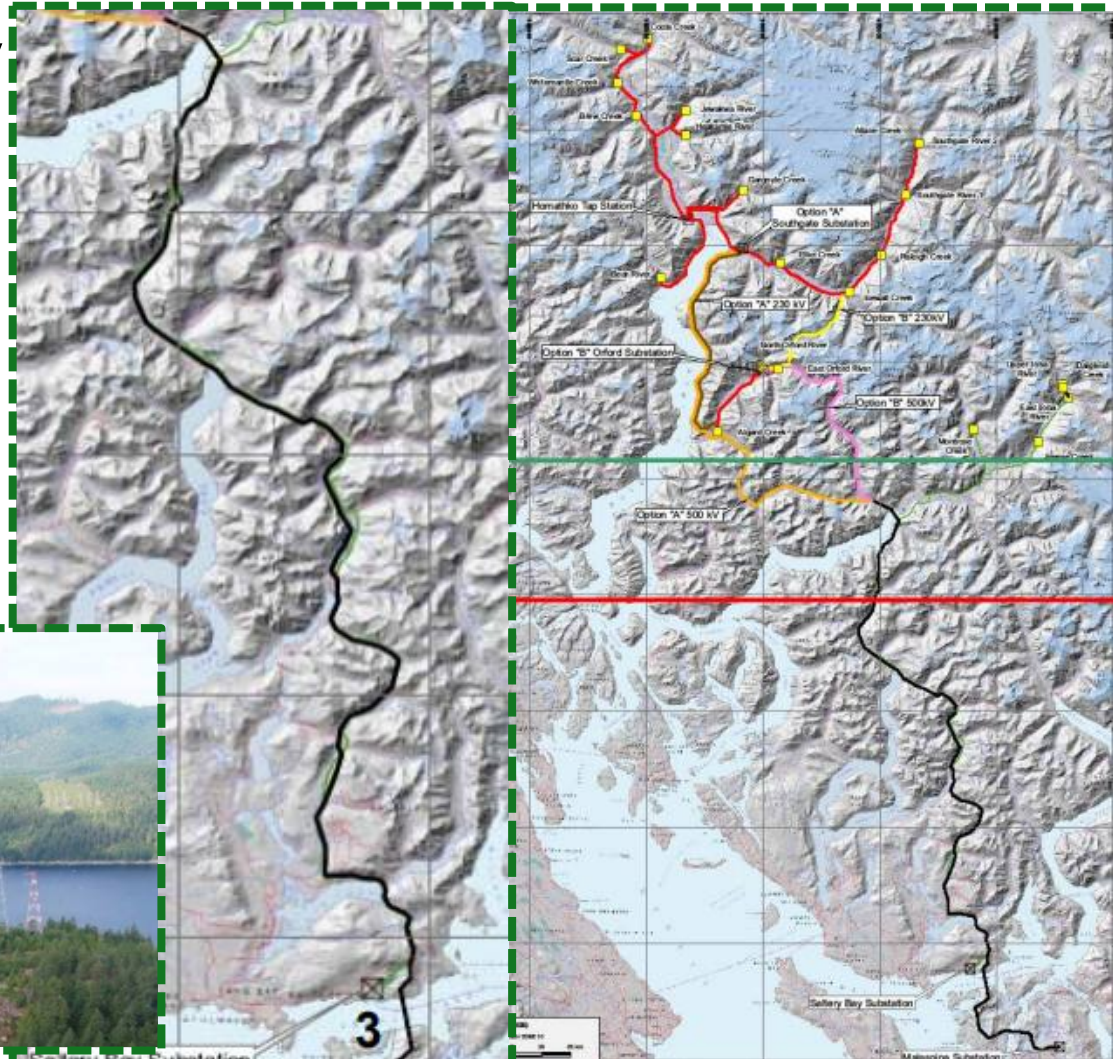


- Museum display
- Mowat Bay 2004
- Wilde Road 2016

Transmission line - 2010

qathet Forest Timeline 1990 – 2020

- Toba Montrose to Saltery Bay
- “run-of-river” 235 MW
- Path for Grizzly to nearby forest



Technologies

qathet Forest Timeline 1990 – 2020



Tilt contracting Russ Parsons

- Madill 2250 tilting **feller processor**, with a Waratah 626 head.

Recreation in qathet Region

qathet Forest Timeline 1990 – 2020

- ORUG Society
- Hiking - Sunshine Coast Trail
- Cycling
- ATV Club
- Horse Riders
- Winter Recreation
- Alpine Climbers
- Hunting and Fishing

POWELL RIVER REGIONAL TRAILS PLAN

y

5,000 10,000 Meters
1:150,000



Legend

- | | | |
|---------------------------|-----------------------|-----------------|
| Trail Type | POWELL Trail Area | Minor Road |
| Non-Motorized - Multi-Use | Casino | Major Road |
| Motorized - Multi-Use | Parks Rec and Reserve | Local Road |
| Casino | Ta'kwin Treaty Lands | Ferry Route |
| Portage | | Resource Road |
| Sunshine Coast Trail | | Restricted Road |

Statement of Limitation
The information included on this map has been compiled by BHA from a variety of sources and is subject to change without notice. BHA makes no representation or warranty expressed or implied, as to accuracy, completeness, timeliness or rights to the use of such information. BHA shall not be liable for any general, special, indirect, incidental or consequential damages (including, but not limited to, lost revenues or lost profits) resulting from the use or misuse of the information contained on this map.

Prepared For:
POWELL RIVER REGIONAL DISTRICT
4022-4675 Marine Avenue
Powell River, BC
Canada V8B 2L2
Tel: 604 485 2280
www.powellriverd.bc.ca

Prepared by:
BHA
Brent Haxley & Associates
4-1005 Alpha Lake Road
Whistler, BC V0N 1B1
604 932 7002
bha@brenthaxley.com

<https://sunshinecoast-trail.com/prpaws/>

Recreation – PR Parks and wilderness

qathet Forest Timeline 1990 – 2020

Society

Since **1992**, 180 km, 15 huts, founded/led by Eagle Walz and many volunteers



<https://sunshinecoast-trail.com/prpaws/>

qathet Forest Timeline 1990 – 2020

Recreation – PR PAWS

Hut-to-Hut Hiking



Manzanita Hut



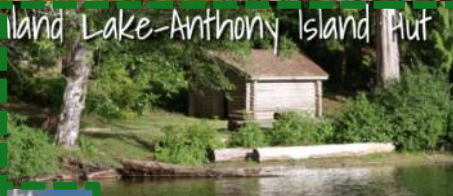
Jeweley Pond Hut



Inland Lake West Hut



Inland Lake-Anthony Island Hut



Confederation Lake Hut



Fiddlehead Landing Hut



Tin Hat Hut



Elk Lake Hut



Wolf Hill Hut



Golden Stanley Hut



Troubridge Hut



Troubridge Emergency Shelter



Rainy Day Lake Hut



Fairview Bay Hut



Recreation – Powell River Canoe Route



- Since **mid-80s**; eight lakes, 55km of paddling, 5-6 portages, 23 rec sites
- BC Recreation Sites and Trails BC
- Powell River Educational Services Society



<http://www.squad.ca/index.php?>

qathet Forest Timeline 1990 – 2020

Recreation – BOMB Squad – since 1987



<https://bikepowellriver.ca/>

qathet Forest Timeline 1990 – 2020

Recreation – Cycling “Chain Gang”



<https://bikepowellriver.ca/>

qathet Forest Timeline 1990 – 2020

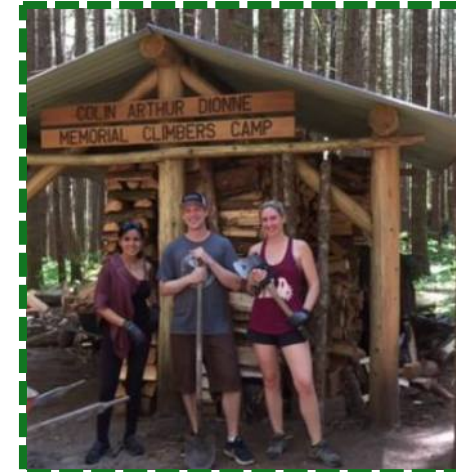
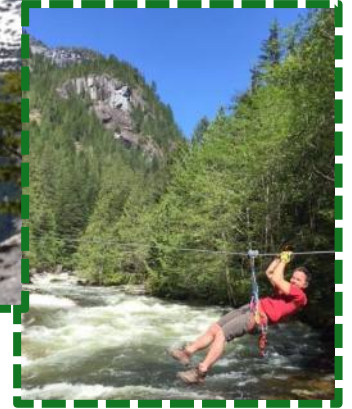
Recreation – Knuckleheads



<https://bikepowellriver.ca/>

qathet Forest Timeline 1990 – 2020

Recreation – Access Climbers



Recreation – ATV Club

qathet Forest Timeline 1990 – 2020

<https://www.facebook.com/groups/1553411808251454>
Wednesday outings – bridge repair, brushing



Recreation – Malaspina Naturalists field trips



Recreation – Ground Search and Rescue

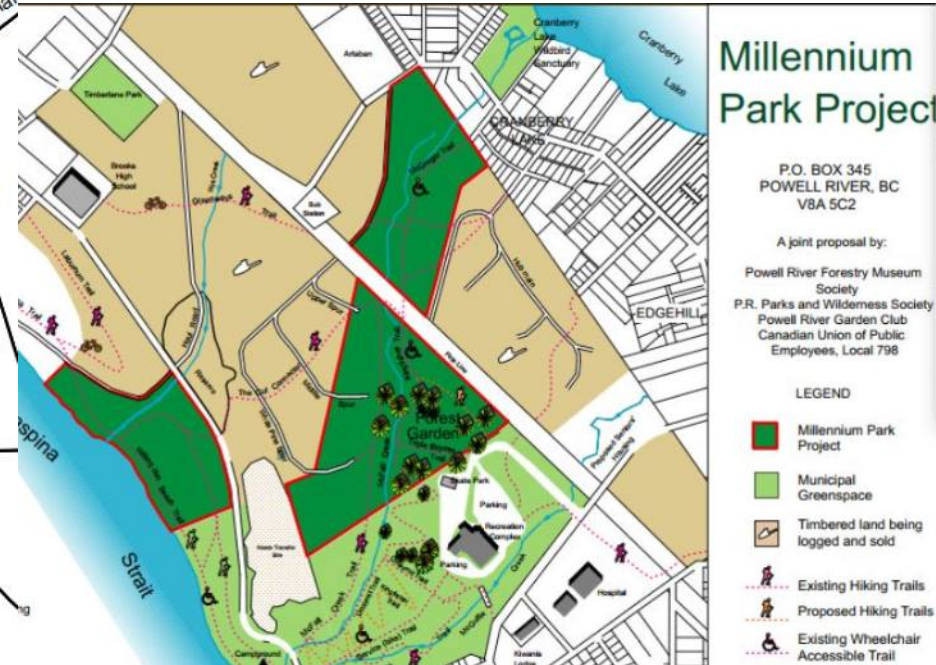
<https://www.facebook.com/PowellRiverSearchRescueSociety/>



Recreation – Millennium Park

qathet Forest Timeline 1990 – 2020

- 1999 – Forestry Museum, PAWS, Garden Club, Union
- 2010 - Land
- 2014 –Trees



Recreation – Trail Riders Club

qathet Forest Timeline 1990 – 2020

<https://www.powellrivertrailriders.com/>



Back Country Horsemen

qathet Forest Timeline 1990 – 2020

<https://www.facebook.com/groups/357808147677251>



**BACK COUNTRY
HORSEMEN OF B.C.**
Powell River Chapter



<https://bchorsemen.org/area-chapters/powell-river/>

Recreation – Willingdon Beach Trail – Forestry Heritage Society



- 1910 – 1918 – Railroad
- 1920s - Ties lifted, volunteers maintain
- 1928 – Willingdon Beach
- 1985 - Forestry Museum Society
- 2001 - Steam donkey project
- 2003 – Trestle project
- 2010 – Millennium Park City-owned
- 2014 – Trees City-purchased
- 2021 – Sewer line



References

Many thanks to the authors:

- Internet: local Museums and Heritage organizations, Tla'amin NehMotl; Faceook groups, forestry firms, BCForests (*gov*)
- Books by: Elsie Paul, Bill Thompson, Barbara Lambert, Peggy Bird, Karen Southern, Ken Bradley, and others